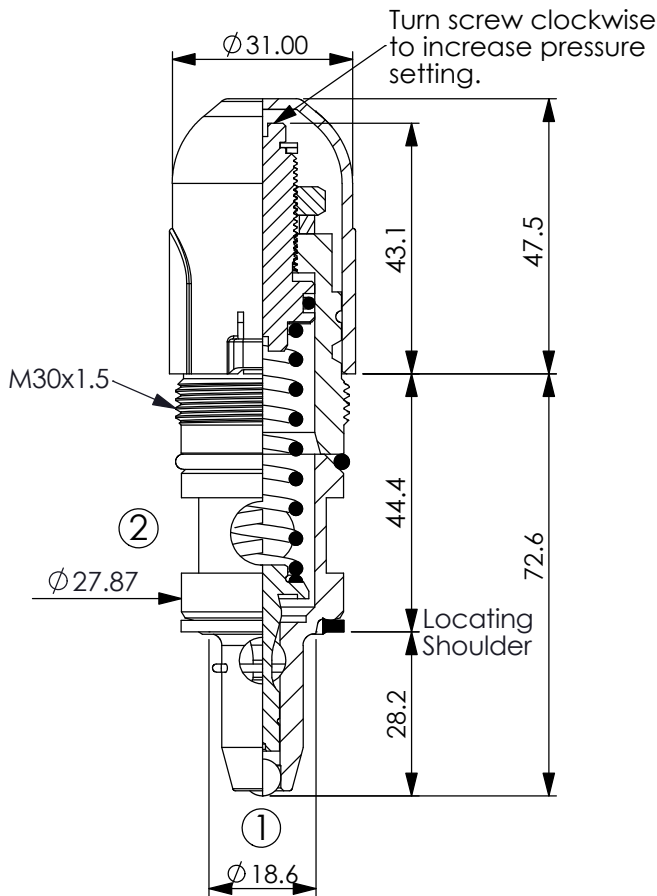
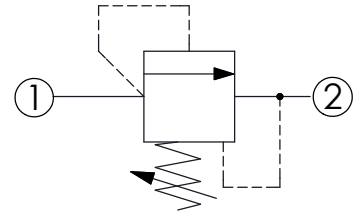


Ordering Code: **RD-30R-X-Y-Z**



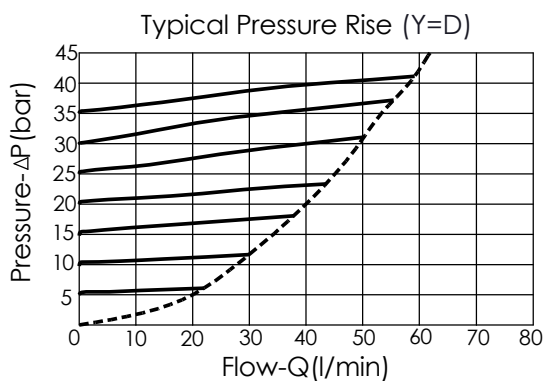
UNIT:mm

Illustrations / detail are for reference only. Data subject to change.



TECHNICAL DATA

Max. Operating pressure:	350 bar
Rated flow:	120 l/min
Cavity-Tooling:	30R-2
Installation torque:	60 - 70 Nm
Weight:	0.26 (Z=L) 0.27 (Z=D) kg



X OPERATION

20 ① to ② (P to T)

· Maximum Leakage Approximately (5 drops/min. to 85% of nominal setting)

Y PRESSURE SETTING

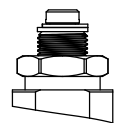
D 15 - 55 bar (28 bar Standard Setting)

E 5 - 28 bar (14 bar Standard Setting)

W 55 - 315 bar (70 bar Standard Setting)

Z OPTIONS

L Leakproof hex. socket screw.



D Plastic Cover.

