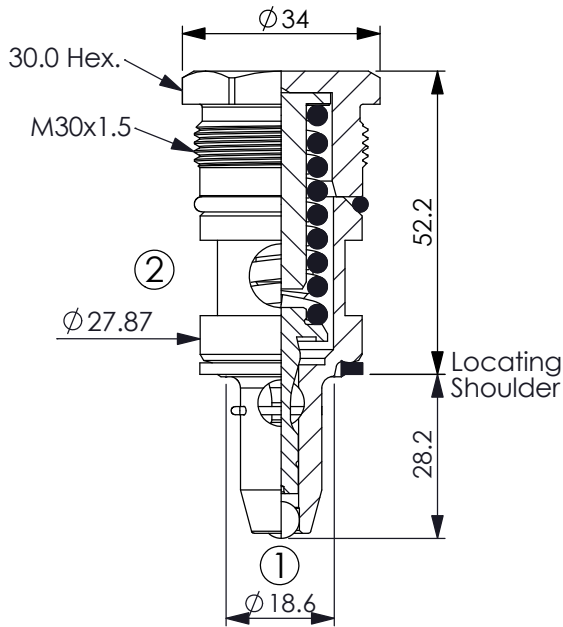
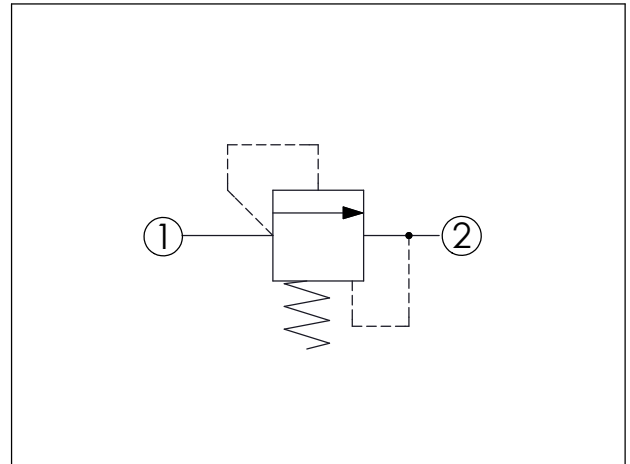


Ordering Code: **RD-30R-X-Y-Z**



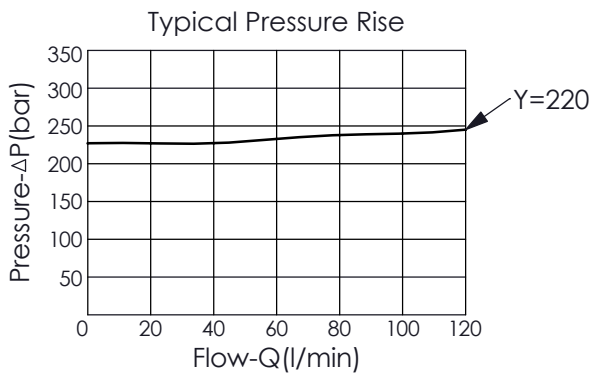
UNIT:mm

Illustrations / detail are for reference only. Data subject to change.



TECHNICAL DATA

Max. Operating pressure:	350	bar
Rated flow:	120	l/min
Cavity-Tooling:	30R-2	
Installation torque:	60 - 70	Nm
Weight:	0.210	kg



X OPERATION

20 ① to ② (P to T)

· Maximum Leakage Approximately (5 drops/min. to 85% of nominal setting)

Y CRACKING PRESSURE RANGE

220 220 - 240 bar (at 1.8 LPM)

Z OPTIONS

N Non-adjustable