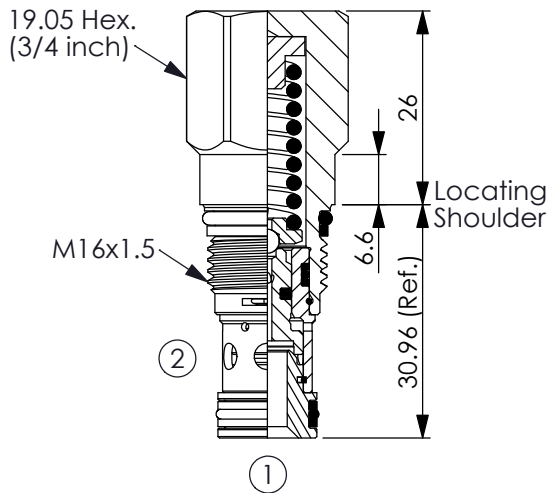
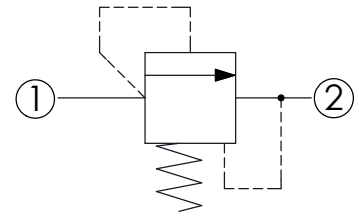


Ordering Code: **RD-162A-X-Y-Z**



UNIT:mm

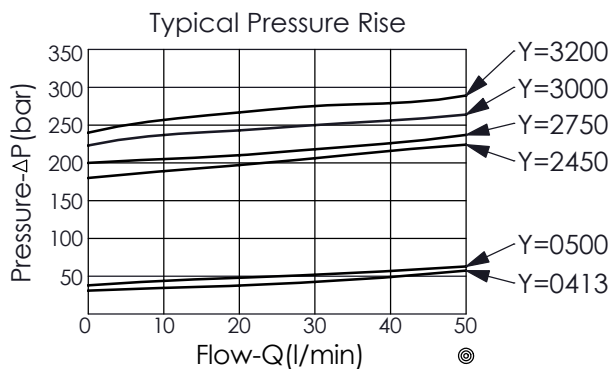
Illustrations / detail are for reference only. Data subject to change.



TECHNICAL DATA

Max. pressure:	350	bar
Rated flow:	45	l/min
Cavity-Tooling:	162A-2	
Installation torque:	27 - 33	Nm
Weight:	0.10	kg

Will accept maximum pressure at port ② ; suitable for use in cross port relief circuits.



X OPERATION

25 Direct Acting
① to ② (P to T)

- Response Time-Typical (2 ms)
- Maximum Leakage Approximately (5 drops/min. to 85% of nominal setting)
- Dirt tolerant

Y CRACKING PRESSURE RANGE

0413	413 - 457 psi (28.5 - 31.5 bar)
0500	500 - 580 psi (34.5 - 40 bar)
2450	2450 - 2650 psi (170 - 185 bar)
2750	2750 - 3000 psi (192 - 210 bar)
3000	3000 - 3200 psi (210 - 225 bar)
3200	3200 - 3500 psi (225 - 245 bar)

Z OPTIONS

N Non-adjustable