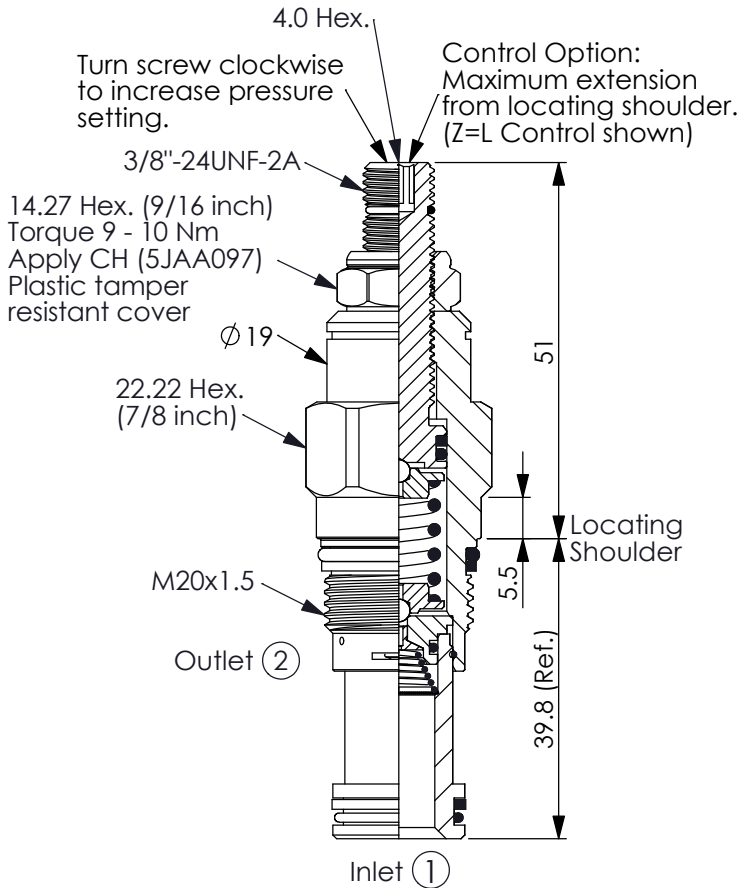
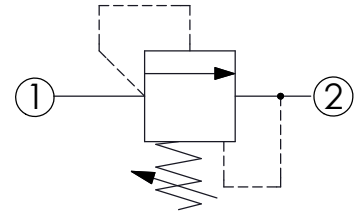


Ordering Code: **RD-10A-X-Y-Z**



UNIT:mm

Illustrations / detail are for reference only. Data subject to change.



TECHNICAL DATA

Max. Operating pressure: 350 bar

Rated flow: 1 l/min

Cavity-Tooling: 10A-2

Installation torque: 40 - 50 Nm

Weight: 0.14 (Z=L) 0.15 (Z=KF) kg

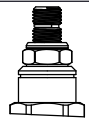
X OPERATION

21 Direct Acting Pilot Stage
① to ② (P to T)

- Response Time-Typical (2 ms)
- Maximum Leakage Approximately (5 drops/min. to 85% of nominal setting)
- Dirt tolerant
- Standard Orifice: $\phi 0.7$
(If the diameter of orifice needs to be enlarge, please contact us. For example: ordering code RD10A21-Y-Z-09, the orifice is $\phi 0.9$)

Z OPTIONS

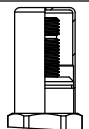
L Leakproof hex. socket screw.



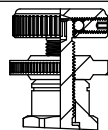
LP Leakproof hex. socket screw. With stainless steel external metal components (Buna-N Seal)



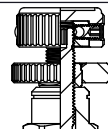
C Stainless Steel Tamper Resistant Cover.



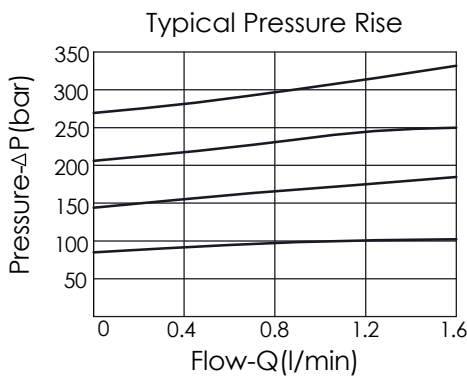
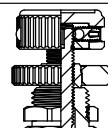
BA Handknob and aluminum locknut.



K Handknob with Lock Knob.
(Order Code: 6ZAK001)



KF Handknob with Panel Mount.



Y PRESSURE SETTING

A	1.7 - 210 bar (70 bar Standard Setting)
B	1.7 - 105 bar (70 bar Standard Setting)
C	1.7 - 420 bar (70 bar Standard Setting)
D	1.7 - 55 bar (28 bar Standard Setting)
E	1.7 - 28 bar (14 bar Standard Setting)
W	1.7 - 315 bar (70 bar Standard Setting)