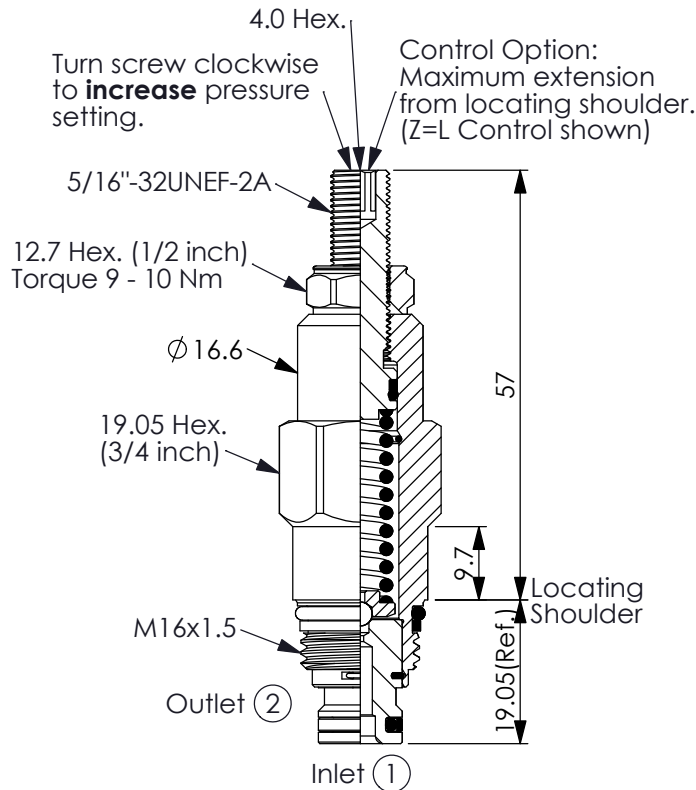
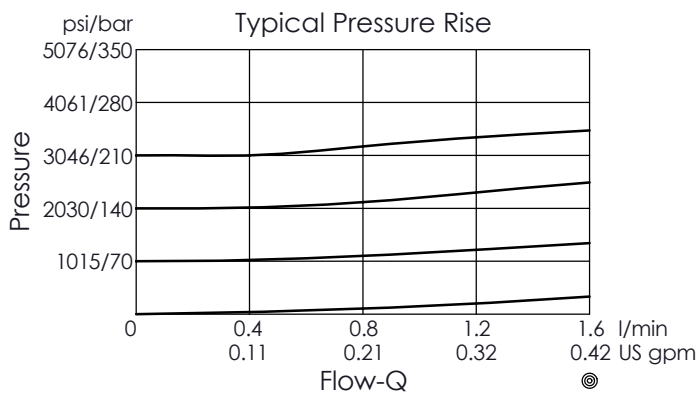


Ordering Code: **RD-8A-X-Y-Z**

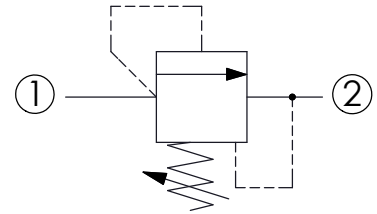


UNIT:mm

Illustrations / detail are for reference only. Data subject to change.



Y	PRESSURE SETTING
A	1.7 - 210 bar (70 bar Standard Setting)
B	1.7 - 105 bar (70 bar Standard Setting)
C	1.7 - 420 bar (70 bar Standard Setting)
D	1.7 - 55 bar (28 bar Standard Setting)
E	1.7 - 28 bar (14 bar Standard Setting)
W	1.7 - 315 bar (70 bar Standard Setting)



TECHNICAL DATA

Max. Operating pressure:	350 bar
Rated flow:	1 l/min
Cavity-Tooling:	8A-2
Installation torque:	27 - 33 Nm
Weight:	0.089 (Z=L) kg

X OPERATION

21 ① to ② (P to T)

- Response Time-Typical (2 ms)
- Maximum Leakage Approximately (5 drops/min. to 85% of nominal setting)
- Dirt tolerant
- Standard Orifice: Ø0.9

Z OPTIONS

L	Leakproof hex. socket screw.	
C	Stainless Steel Tamper Resistant Cover.	
K	Handknob with Lock Knob. (Order Code: 7ZAK001)	