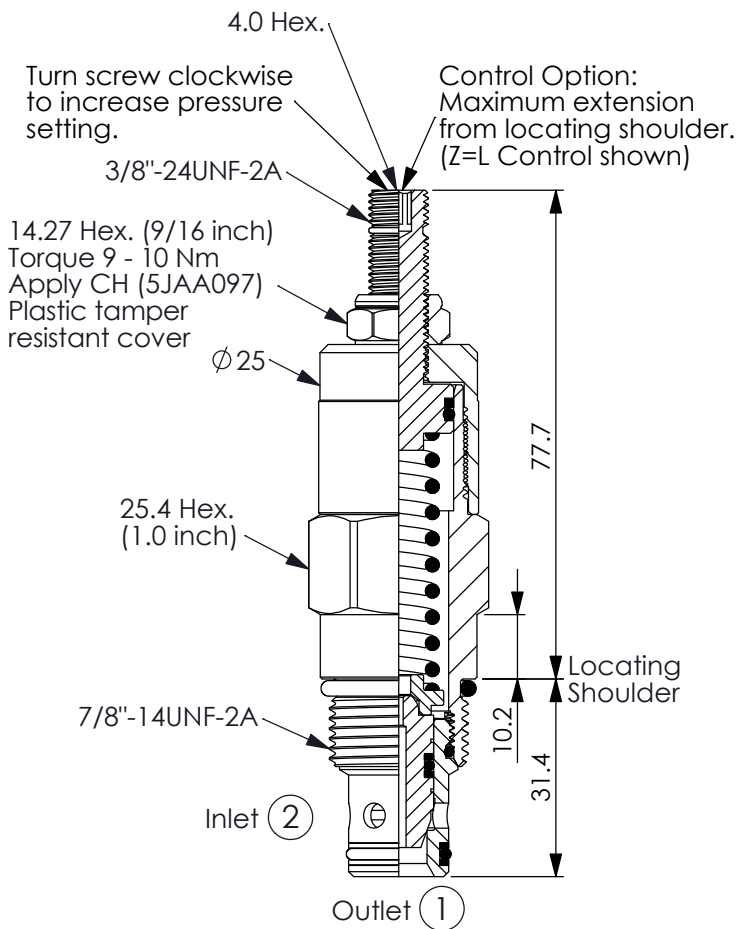
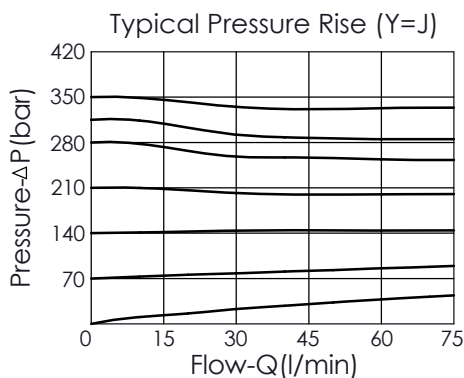


Ordering Code: **RD-10W-X-Y-Z**

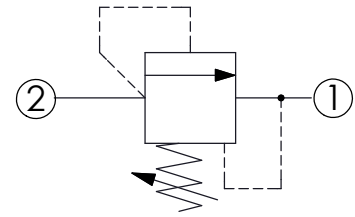


UNIT:mm

Illustrations / detail are for reference only. Data subject to change.



Y	PRESSURE SETTING	
B	10 - 105 bar (70 bar Standard Setting)	
D	10 - 55 bar (28 bar Standard Setting)	
J	34 - 350 bar (70 bar Standard Setting)	
W	17 - 250 bar (70 bar Standard Setting)	



TECHNICAL DATA

Max. pressure:	350	bar
Rated flow:	75	l/min
Cavity-Tooling:	10W-2	
Installation torque:	35 - 45	Nm
Weight:	0.23 (Z=L)	kg
Will accept maximum pressure at port ① ; suitable for use in cross port relief circuits.		

X OPERATION

2A ② to ① (P to T)

- Response Time-Typical (2 ms)
- Maximum Leakage Approximately (5 drops/min. to 85% of nominal setting)
- Dirt tolerant

Z OPTIONS

L	Leakproof hex. socket screw.	
C	Stainless Steel Tamper Resistant Cover.	
T	Three-winged Handknob Kit.	
K	Handknob with Lock Knob. (Order Code: 6ZAK001)	