

Ordering Code: **RD-08W-X-Y-Z**

Turn screw clockwise to increase pressure setting.

Control Option: Maximum extension from locating shoulder. (Z=L Control shown)

5.0 Hex.

19.0 Hex. Torque 25 - 30 Nm

24.0 Hex.

3/4"-16UNF-2A

Outlet ②

$\phi 12.70^{+0.05}_{+0}$

* $\phi 10$ MIN.

Inlet ①

Locating Shoulder

44.5

2.8

27

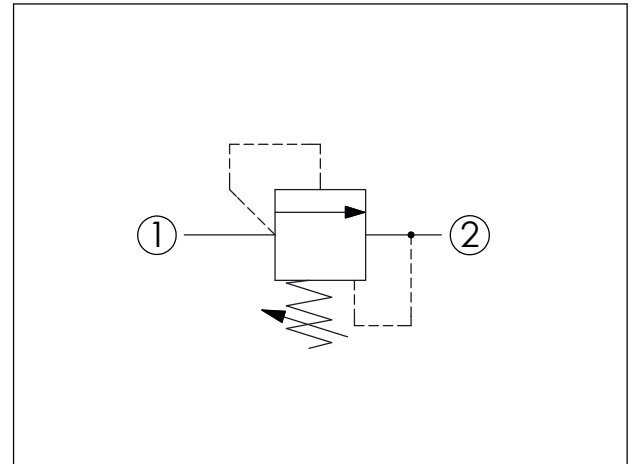
29

34

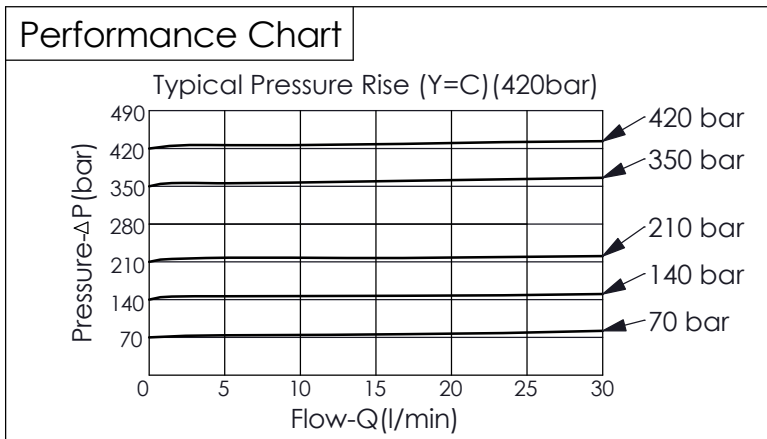
*35 MIN.

* Recommend dimension
Illustrations / detail are for reference only.
Data subject to change.

UNIT:mm



TECHNICAL DATA	
Max. Operating pressure:	350 bar (Refer to performance chart)
Rated flow:	30 l/min (Refer to performance chart)
Cavity-Tooling:	08W-2 (Refer to recommend dimension)
Installation torque:	25 - 35 Nm
Weight:	0.136 kg
• Reseat pressure: nominal 90% of cracking pressure	



X	OPERATION	
2S	Direct Acting, Guided Poppet Type (Short Spindle Type)	
• Maximum Leakage Approximately (5 drops/min. to 85% of nominal setting)		

Y	SPRINGS	
A	50 - 210 bar (70 bar Standard Setting)	
B	25 - 105 bar (70 bar Standard Setting)	
C	120 - 420 bar (140 bar Standard Setting)	
D	15 - 55 bar (28 bar Standard Setting)	
W	120 - 350 bar (140 bar Standard Setting)	

Z	OPTIONS	
L	Leakproof hex. socket screw.	