

Ordering Code: **RD-10W-X-Y-Z**

Turn screw clockwise to increase pressure setting.

Control Option:  
Maximum extension from locating shoulder.  
(Z:L Control shown)

44.5

Locating Shoulder

32

34.5

38

\*42 MIN.

Outlet ②

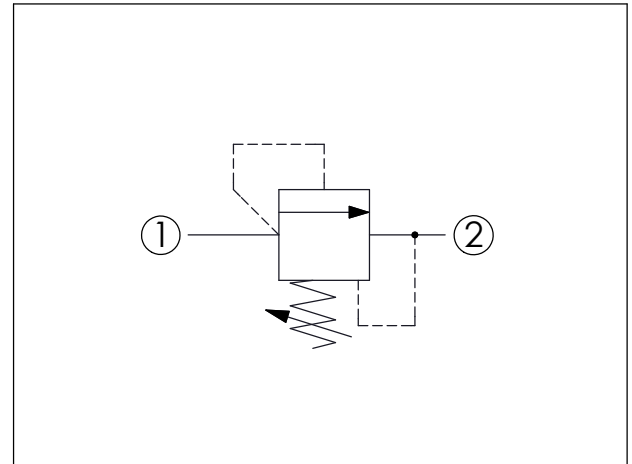
$\phi 15.87^{+0.05}_{+0}$

\* $\phi 12$  MIN.

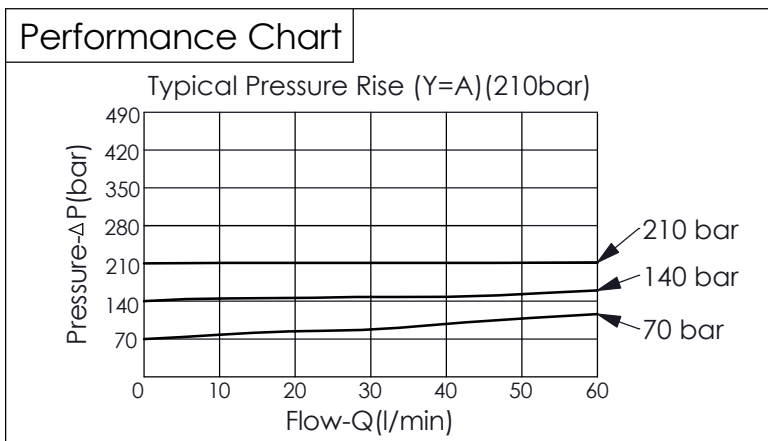
Inlet ①

\* Recommend dimension  
Illustrations / detail are for reference only.  
Data subject to change.

UNIT:mm



TECHNICAL DATA	
Max. Operating pressure:	350 bar (Refer to performance chart)
Rated flow:	60 l/min (Refer to performance chart)
Cavity-Tooling:	10W-2 (Refer to recommend dimension)
Installation torque:	35 - 45 Nm
Weight:	0.159 kg
• Reseat pressure: nominal 90% of cracking pressure	



X	OPERATION	
2S	Direct Acting, Guided Poppet Type (Short Spindle Type)	
• Maximum Leakage Approximately ( 5 drops/min. to 85% of nominal setting)		

Y	SPRINGS	
A	50 - 210 bar (70 bar Standard Setting)	
B	25 - 105 bar (70 bar Standard Setting)	
C	120 - 420 bar (140 bar Standard Setting)	
D	15 - 55 bar (28 bar Standard Setting)	
W	120 - 350 bar (140 bar Standard Setting)	

Z	OPTIONS	
L	Leakproof hex. socket screw.	