

Ordering Code: **RD-19E-X-Y-Z**

Turn screw clockwise to increase pressure setting.

Control Option: Maximum extension from locating shoulder. (Z=L Control shown)

5.0 Hex.

19.0 Hex. Torque 25 - 30 Nm

24.0 Hex.

3/4"-16UNF-2A

Outlet ②

$\phi 15.87 H8 (+0.027/+0)$

* $\phi 11$ MIN.

Inlet ①

Locating Shoulder

44.5

2.8

28.8

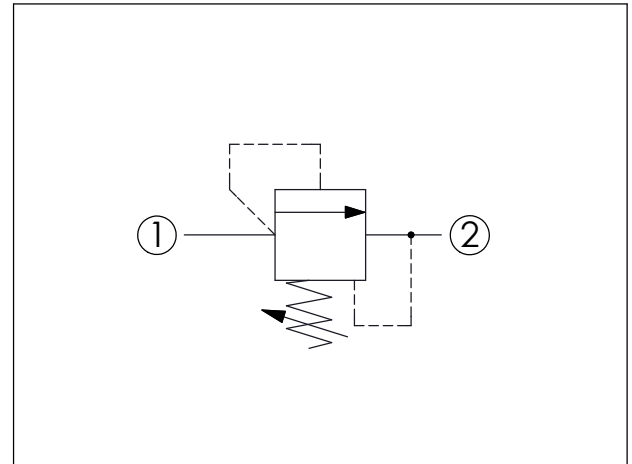
30

33.9

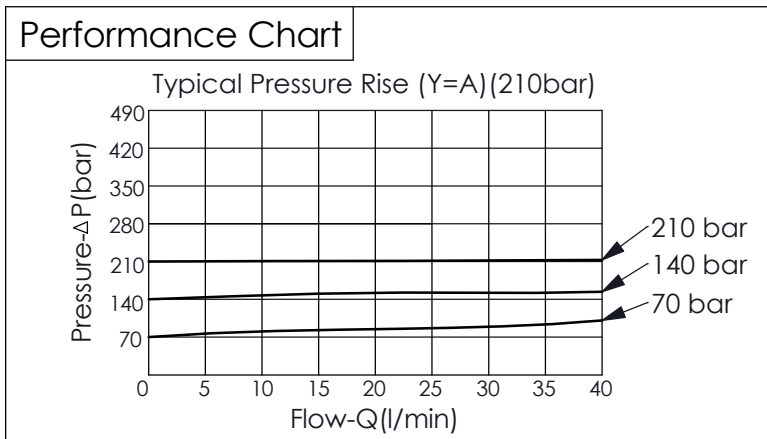
*35 MIN.

UNIT:mm

* Recommend dimension
Illustrations / detail are for reference only.
Data subject to change.



TECHNICAL DATA	
Max. Operating pressure:	350 bar (Refer to performance chart)
Rated flow:	40 l/min (Refer to performance chart)
Cavity-Tooling:	19E-2 (Refer to recommend dimension)
Installation torque:	25 - 35 Nm
Weight:	0.137 kg
• Reseat pressure: nominal 90% of cracking pressure	



X	OPERATION	
2S	Direct Acting, Guided Poppet Type (Short Spindle Type)	
• Maximum Leakage Approximately (5 drops/min. to 85% of nominal setting)		

Y	SPRINGS	
A	50 - 210 bar (70 bar Standard Setting)	
K	25 - 155 bar (70 bar Standard Setting)	

Z	OPTIONS	
L	Leakproof hex. socket screw.	