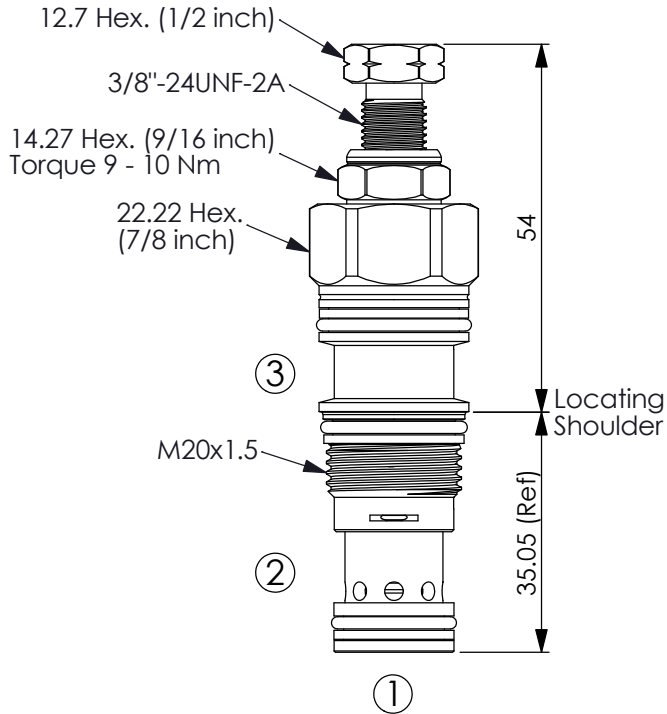
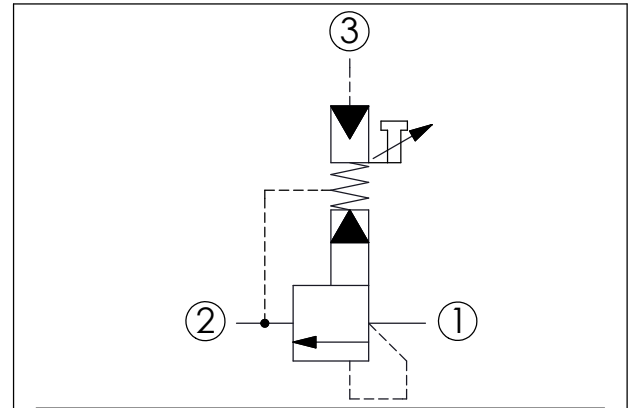


Ordering Code: **RH-11A-X-Y-Z**

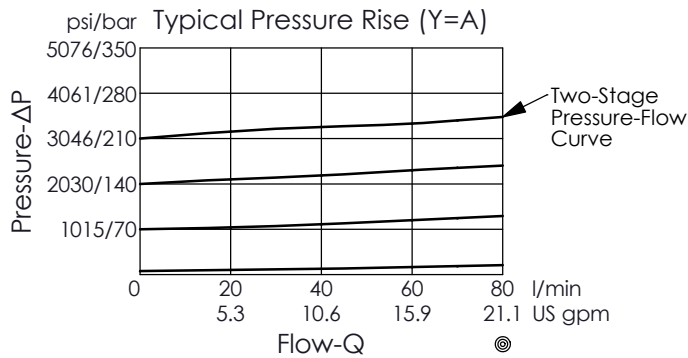
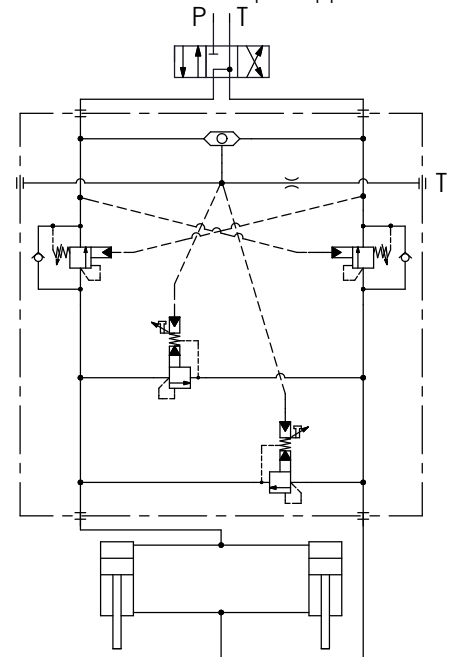


UNIT:mm

Illustrations / detail are for reference only. Data subject to change.



Example: Application Example



### TECHNICAL DATA

Max. Operating pressure:	210 bar
Rated flow:	60 l/min
Cavity-Tooling:	11A-3
Installation torque:	40 - 50 Nm
Weight:	0.138 kg

Y	SPRINGS	
	ADJUSTMENT RANGES	
A	7 - 210 bar (70 bar Standard Setting)	
B	3.5 - 105 bar (70 bar Standard Setting)	
D	1.7 - 55 bar (28 bar Standard Setting)	
	<ul style="list-style-type: none"> <li>One-Stage Pressure: Screw adjustment, the adjustment is around 53 bar/turn. (Port ① to Port ②).</li> <li>Two-Stage Pressure: Pilot pressure at Port ③ exceeds 11 bar. (refer to performance curve).</li> </ul>	

X	OPERATION	
30	Standard Type	
	<ul style="list-style-type: none"> <li>Response Time-Typical (10 ms)</li> <li>Maximum Leakage Approximately (30 cc/min./70 bar)</li> <li>Pilot Ratio 28 : 1</li> </ul>	

Z	OPTIONS	
G	Hex. Wrench Adjustment	