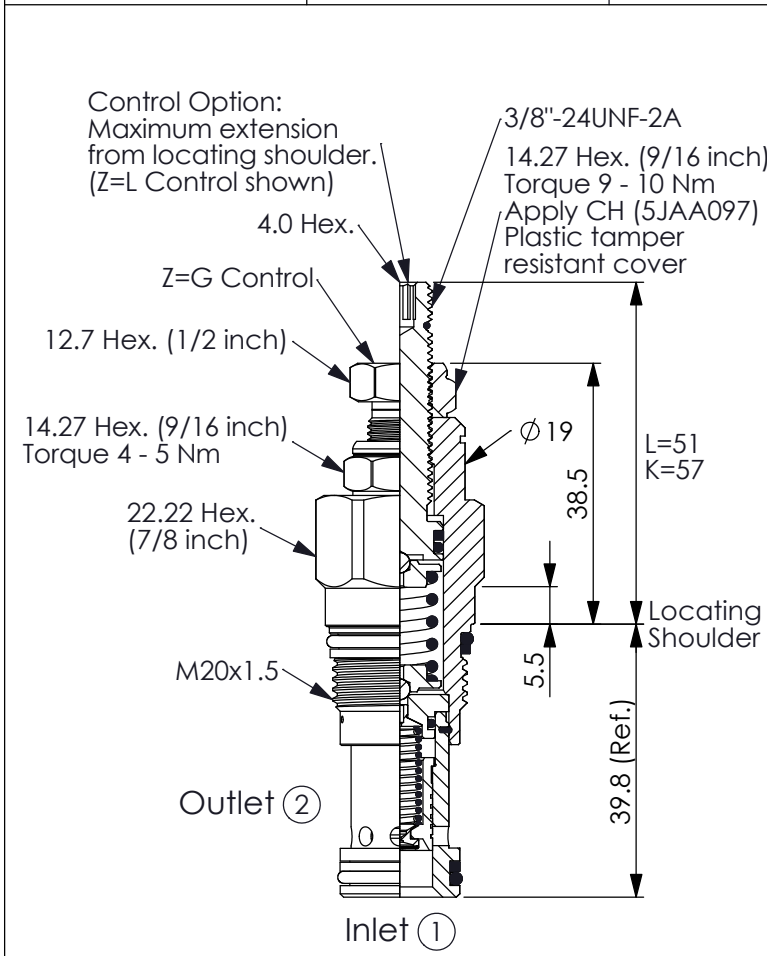
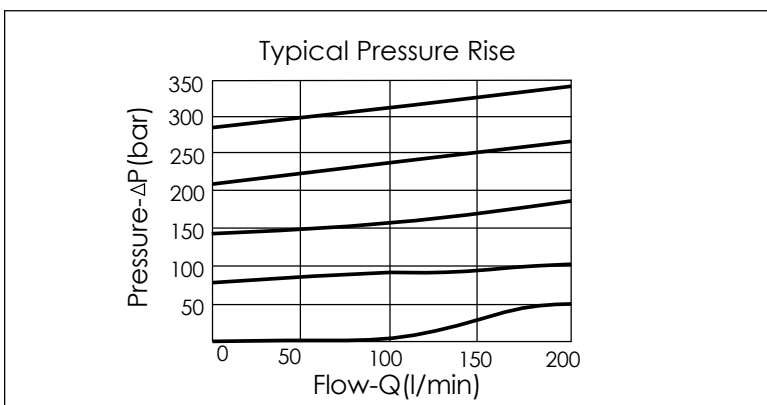


RELIEF VALVE (Pilot Operated Balanced Piston)

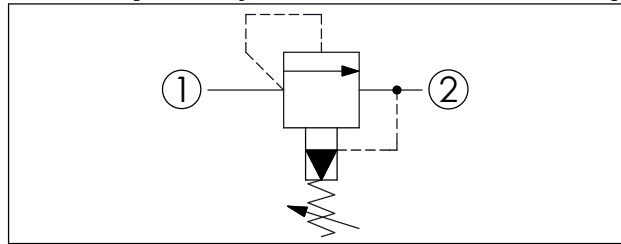
Ordering Code: **RP-10A-X-Y-Z**



UNIT:mm
Illustrations / detail are for reference only. Data subject to change.



Y	SPRINGS	
	ADJUSTMENT RANGES	
A	7 - 210 bar	(70 bar Standard Setting)
B	3.5 - 105 bar	(70 bar Standard Setting)
C	10.5 - 420 bar	(70 bar Standard Setting)
D	1.7 - 55 bar	(28 bar Standard Setting)
E	1.7 - 28 bar	(14 bar Standard Setting)
N	4 - 55 bar	(28 bar Standard Setting)
Q	4 - 28 bar	(14 bar Standard Setting)
W	10.5 - 315 bar	(70 bar Standard Setting)



TECHNICAL DATA	
Max. Operating pressure:	350 bar
Rated flow:	95 l/min
Cavity-Tooling:	10A-2
Installation torque:	40 - 50 Nm
Weight:	0.14 (Z=L,LP) 0.12 (Z=G) 0.15 (Z=LF) 0.13 (Z=GA) kg 0.42 (Z=KF)

Will accept maximum pressure at port ② but it is nessecery to install double back-up rings to valve for cross port relief circuit application. Leakage of spool should be concerned. If you have any questions, please contact Winner's sales department.

X	OPERATION
20	① to ② (P to T)

- Response Time-Typical (10 ms)
- Maximum Leakage Approximately (33 cc/min./70 bar)

Z	OPTIONS (Please refer to detailed instruction)
L	Leakproof hex. socket screw.
LP	Leakproof hex. socket screw. With stainless steel external metal components.
LF	Leakproof hex. socket screw with Panel Mount.
K	Handknob with Lock Knob. (Order Code: 6ZAK001)
KF	Handknob with Panel Mount.
C	Stainless Steel Tamper Resistant Cover.
G	Wrench Adjustment
GA	Socket Head Set Screw with Cap