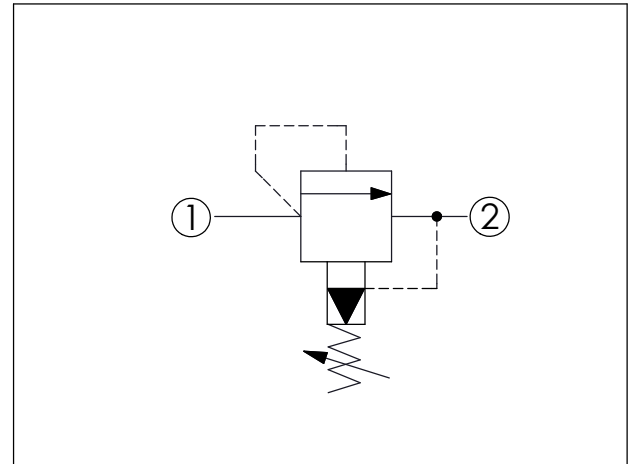
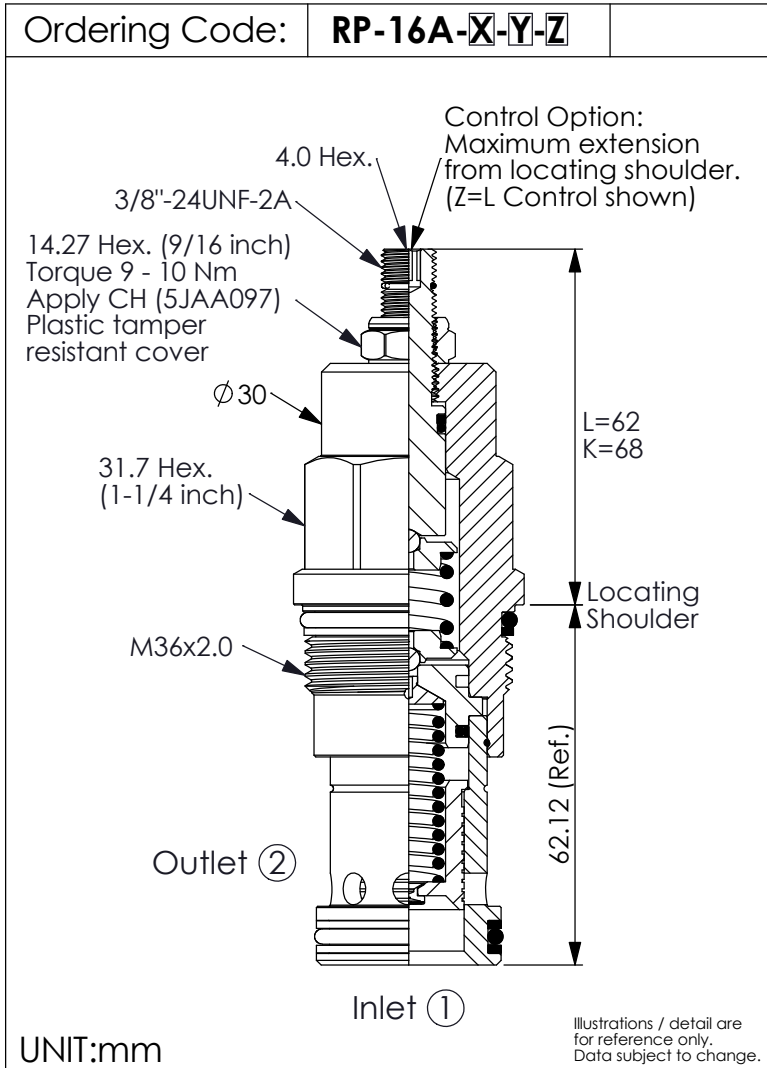


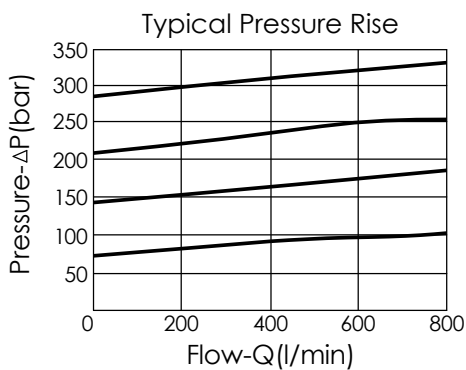
RELIEF VALVE (Pilot Operated Balanced Piston)



TECHNICAL DATA

Max. Operating pressure:	350	bar
Rated flow:	380	l/min
Cavity-Tooling:	16A-2	
Installation torque:	200 - 215	Nm
Weight:	0.53 (Z=L)	kg

Will accept maximum pressure at port ②;
suitable for use in cross port relief circuits.
If used in cross port relief circuits, consider
spool leakage.



X OPERATION

20 ① to ② (P to T)

- Response Time-Typical (10 ms)
- Maximum Leakage Approximately (66 cc/min./70 bar)

Y SPRINGS

ADJUSTMENT RANGES

A	7 - 210 bar (70 bar Standard Setting)
B	3.5 - 105 bar (70 bar Standard Setting)
C	10.5 - 420 bar (70 bar Standard Setting)
D	1.7 - 55 bar (28 bar Standard Setting)
E	1.7 - 28 bar (14 bar Standard Setting)
N	4 - 55 bar (28 bar Standard Setting)
Q	4 - 28 bar (14 bar Standard Setting)
W	10.5 - 315 bar (70 bar Standard Setting)

Z OPTIONS

L	Leakproof hex. socket screw.	
K	Handknob with Lock Knob. (Order Code: 6ZAK001)	
C	Stainless Steel Tamper Resistant Cover.	