

Ordering Code: **RP-10W-X-Y-Z**

Control Option:
Maximum extension
from locating shoulder.
(Z=L Control shown)

4.0 Hex.

3/8"-24UNF-2A

14.27 Hex. (9/16 inch)
Torque 9 - 10 Nm
Apply CH (5JAA097)
Plastic tamper
resistant cover

Ø19

22.22 Hex.
(7/8 inch)

7/8"-14UNF-2A

Outlet ②

Inlet ①

Back-up Ring

Back-up Ring

Example: Z=L-7

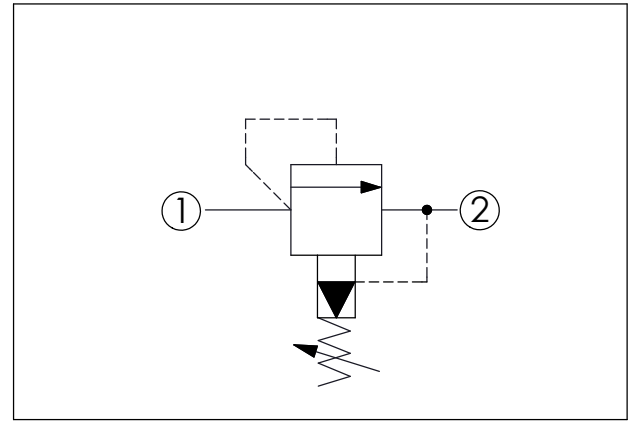
L=60
K=66

Locating
Shoulder

31.5

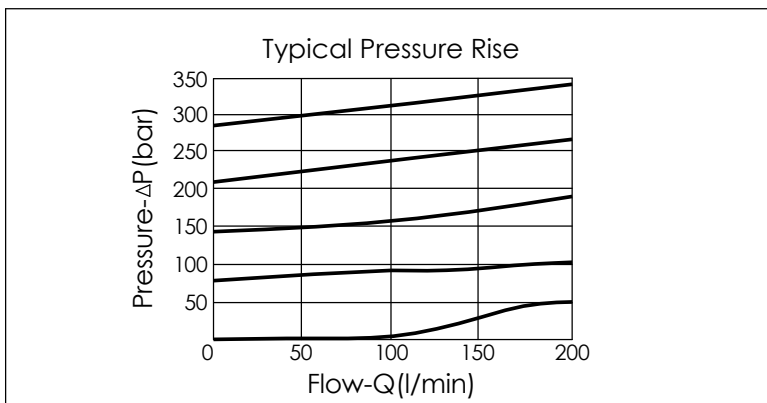
UNIT:mm

Illustrations / detail are
for reference only.
Data subject to change.



TECHNICAL DATA	
Max. Operating pressure:	350 bar
Rated flow:	95 l/min
Cavity-Tooling:	10W-2
Installation torque:	35 - 45 Nm
Weight:	0.16 (Z=L) kg
Will accept maximum pressure at port ② but it is necessary to install double back-up rings to valve for cross port relief circuit application. Leakage of spool should be concerned. If you have any questions, please contact Winner's sales department.	

X	OPERATION
20	① to ② (P to T)
<ul style="list-style-type: none"> Response Time-Typical (10 ms) Maximum Leakage Approximately (33 cc/min./70 bar) 	



Z	OPTIONS
L	Leakproof hex. socket screw.
L-7	Leakproof hex. socket screw. Double Back-up Ring
K	Handknob with Lock Knob. (Order Code: 6ZAK001)
C	Stainless Steel Tamper Resistant Cover.
BA	Handknob and aluminum locknut.

Y	SPRINGS	
	ADJUSTMENT RANGES	
A	7 - 210 bar	(70 bar Standard Setting)
B	3.5 - 105 bar	(70 bar Standard Setting)
C	10.5 - 420 bar	(70 bar Standard Setting)
D	1.7 - 55 bar	(28 bar Standard Setting)
E	1.7 - 28 bar	(14 bar Standard Setting)
H	2 - 210 bar	(70 bar Standard Setting)
W	10.5 - 315 bar	(70 bar Standard Setting)