

Ordering Code: **RP-10W-X-Y-Z**

Control Option:  
Maximum extension  
from locating shoulder.  
(Z=L Control shown)

4.0 Hex.

3/8"-24UNF-2A

14.27 Hex. (9/16 inch)  
Torque 9 - 10 Nm  
Apply CH (5JAA097)  
Plastic tamper  
resistant cover

Ø19

22.22 Hex.  
(7/8 inch)

7/8"-14UNF-2A

Outlet ②

Inlet ①

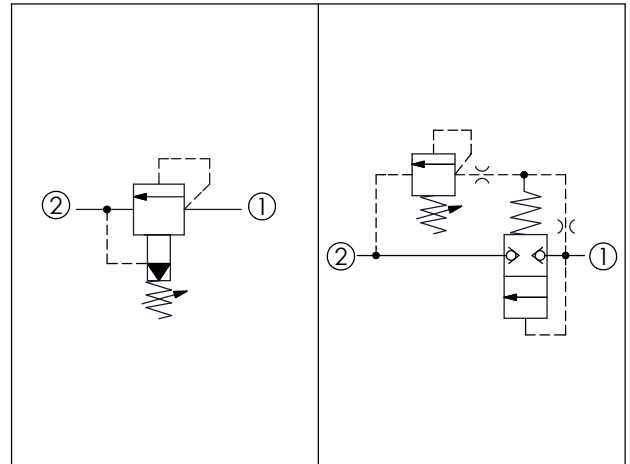
L=60  
K=66

31.5

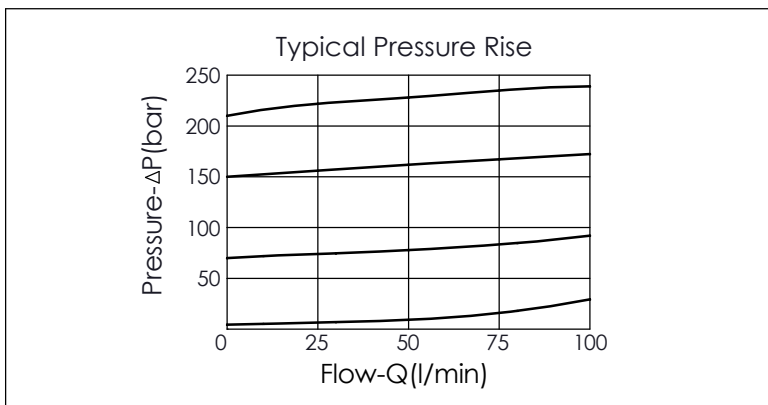
Locating  
Shoulder

UNIT:mm

Illustrations / detail are  
for reference only.  
Data subject to change.

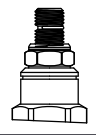
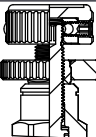


TECHNICAL DATA	
Max. Operating pressure:	350 bar
Rated flow:	95 l/min
Cavity-Tooling:	10W-2
Installation torque:	35 - 45 Nm
Weight:	0.17 (Z=L) kg
Will accept maximum pressure at port ②; suitable for use in cross port relief circuits.	



X	OPERATION
2G	Balanced Poppet
<ul style="list-style-type: none"> <li>Response Time-Typical (7 ms)</li> <li>Maximum Leakage Approximately (0.7 cc/min./70 bar)</li> <li>If the pressure drop of relief valve is high, it easily occurs cavitation which cause noise and manifold erosion. In order to improve this situation, please select balanced poppet structure.</li> </ul>	

Y	SPRINGS	
	ADJUSTMENT RANGES	
A	7 - 210 bar	(70 bar Standard Setting)
B	3.5 - 105 bar	(70 bar Standard Setting)
C	10.5 - 420 bar	(70 bar Standard Setting)
N	4 - 55 bar	(28 bar Standard Setting)
Q	4 - 28 bar	(14 bar Standard Setting)
W	7 - 315 bar	(70 bar Standard Setting)

Z	OPTIONS
L	Leakproof hex. socket screw. 
K	Handknob with Lock Knob. (Order Code: 6ZAK001) 
C	Stainless Steel Tamper Resistant Cover. 