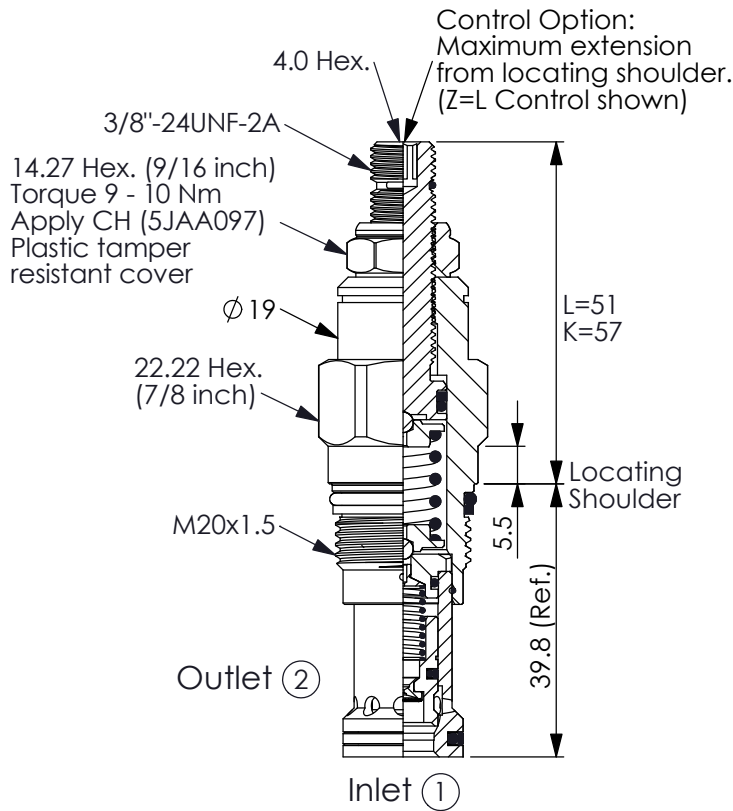
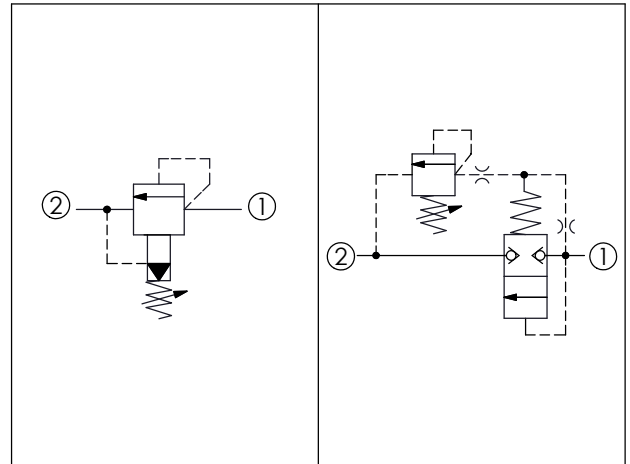


Ordering Code: **RP-10A-X-Y-Z**



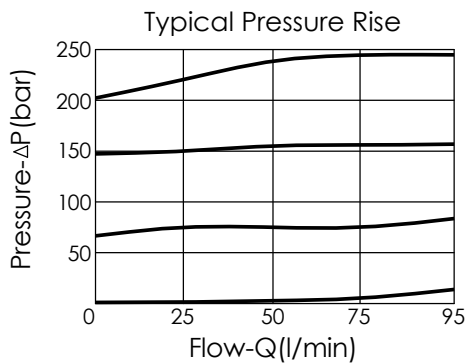
UNIT:mm

Illustrations / detail are for reference only. Data subject to change.



### TECHNICAL DATA

Max. Operating pressure:	350 bar
Rated flow:	95 l/min
Cavity-Tooling:	10A-2
Installation torque:	40 - 50 Nm
Weight:	0.14 (Z=L) kg
Will accept maximum pressure at port ②; suitable for use in cross port relief circuits.	



### X OPERATION

**2G** Balanced Poppet

- Response Time-Typical (7 ms)
- Maximum Leakage Approximately (0.7 cc/min./70 bar)
- If the pressure drop of relief valve is high, it easily occurs cavitation which cause noise and manifold erosion. In order to improve this situation, please select balanced poppet structure.

### Y SPRINGS

#### ADJUSTMENT RANGES

<b>A</b>	7 - 210 bar (70 bar Standard Setting)
<b>B</b>	3.5 - 105 bar (70 bar Standard Setting)
<b>C</b>	10.5 - 420 bar (70 bar Standard Setting)
<b>N</b>	4 - 55 bar (28 bar Standard Setting)
<b>Q</b>	4 - 28 bar (14 bar Standard Setting)
<b>W</b>	7 - 315 bar (70 bar Standard Setting)

### Z OPTIONS

<b>L</b>	Leakproof hex. socket screw.	
<b>K</b>	Handknob with Lock Knob. (Order Code: 6ZAK001)	
<b>C</b>	Stainless Steel Tamper Resistant Cover.	