

RELIEF VALVE (Pilot Operated Balanced Poppet)

Ordering Code: **RP-3A-X-Y-Z**

Control Option:
Maximum extension
from locating shoulder.
(Z=L Control shown)

4.0 Hex.

3/8"-24UNF-2A

14.27 Hex. (9/16 inch)
Torque 9 - 10 Nm
Apply CH (5JAA097)
Plastic tamper
resistant cover

Ø25

28.57 Hex.
(1-1/8 inch)

1.0"-14UNS-2A

Outlet ②

Inlet ①

L=54
K=61

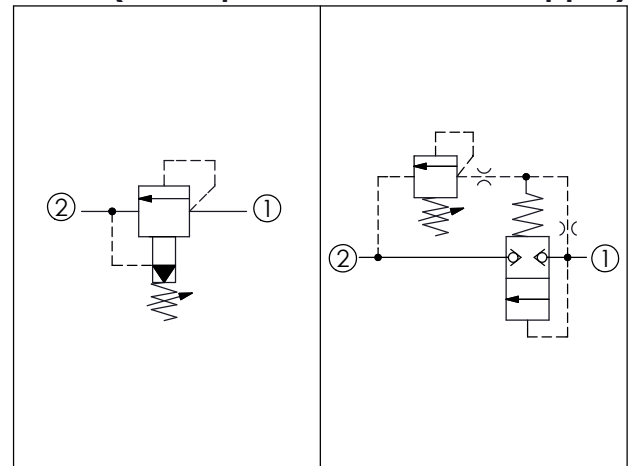
4.7

47.82 (Ref.)

Locating
Shoulder

UNIT:mm

Illustrations / detail are
for reference only.
Data subject to change.



TECHNICAL DATA

Max. Operating pressure: 350 bar

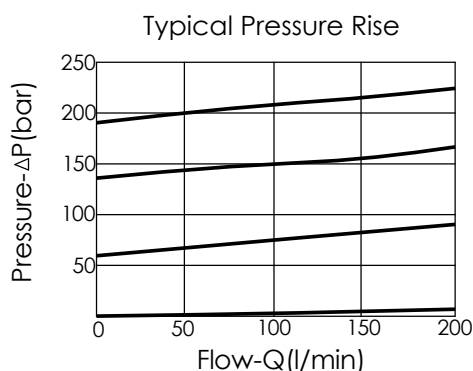
Rated flow: 200 l/min

Cavity-Tooling: 3A-2

Installation torque: 60 - 70 Nm

Weight: 0.26 (Z=L) kg

Will accept maximum pressure at port ②;
suitable for use in cross port relief circuits.



X OPERATION

2G Balanced Poppet

- Response Time-Typical (7 ms)
- Maximum Leakage Approximately (0.7 cc/min)
- If the pressure drop of relief valve is high, it easily occurs cavitation which cause noise and manifold erosion. In order to improve this situation, please select balanced poppet structure.

Y

SPRINGS

ADJUSTMENT RANGES

A	7 - 210 bar (70 bar Standard Setting)
B	3.5 - 105 bar (70 bar Standard Setting)
C	10.5 - 420 bar (70 bar Standard Setting)
N	4 - 55 bar (28 bar Standard Setting)
Q	4 - 28 bar (14 bar Standard Setting)
W	7 - 315 bar (70 bar Standard Setting)

Z

OPTIONS

L	Leakproof hex. socket screw.	
K	Handknob with Lock Knob. (Order Code: 6ZAK001)	
C	Stainless Steel Tamper Resistant Cover.	