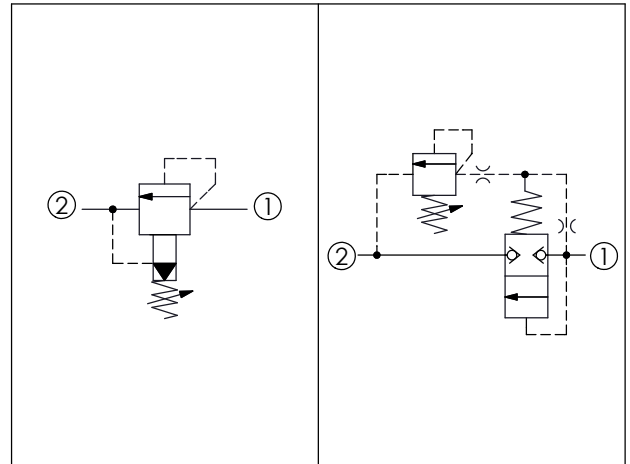
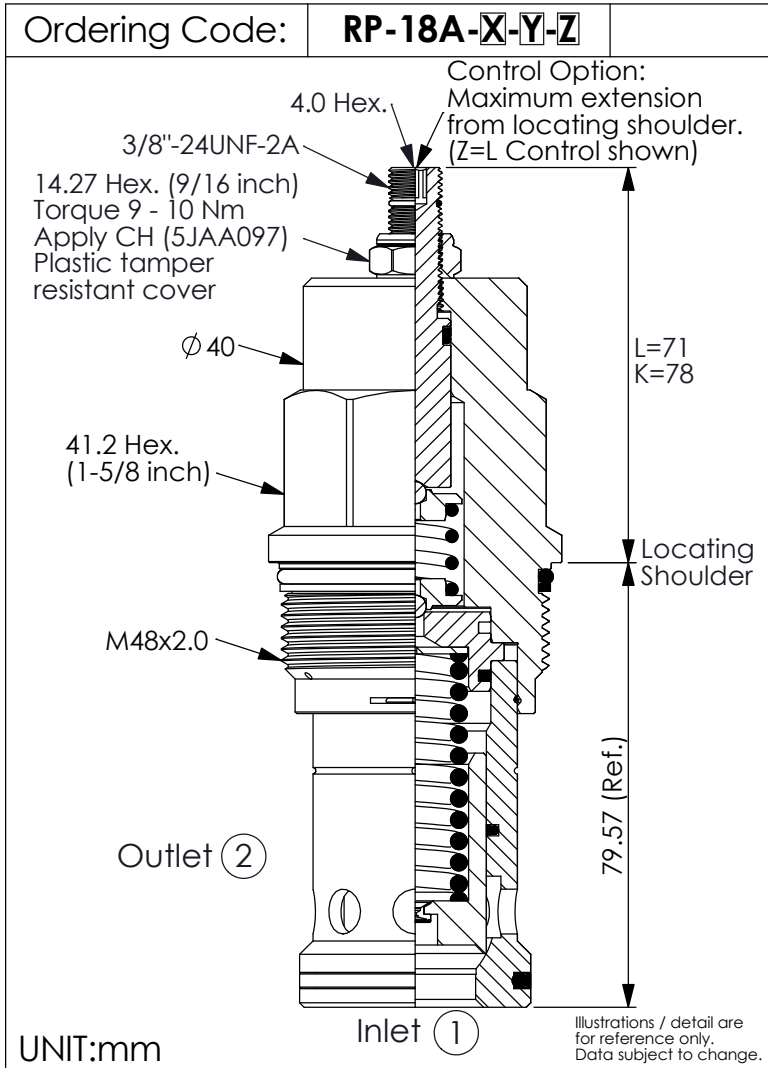
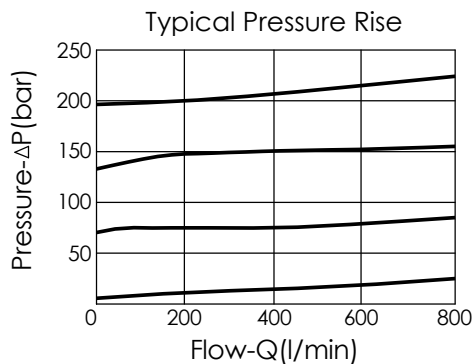


RELIEF VALVE (Pilot Operated Balanced Poppet)



TECHNICAL DATA

Max. Operating pressure:	350 bar
Rated flow:	760 l/min
Cavity-Tooling:	18A-2 (18AB-2)
Installation torque:	465 - 500 Nm
Weight:	1.17 (Z=L) kg
Will accept maximum pressure at port ②; suitable for use in cross port relief circuits.	



X OPERATION

2G Balanced Poppet

- Response Time-Typical (7 ms)
- Maximum Leakage Approximately (0.7 cc/min./70 bar)
- If the pressure drop of relief valve is high, it easily occurs cavitation which cause noise and manifold erosion. In order to improve this situation, please select balanced poppet structure.

Y

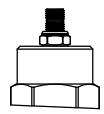
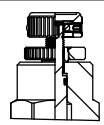
SPRINGS

ADJUSTMENT RANGES

A	7 - 210 bar (70 bar Standard Setting)
B	3.5 - 105 bar (70 bar Standard Setting)
C	10.5 - 420 bar (70 bar Standard Setting)
N	4 - 55 bar (28 bar Standard Setting)
Q	4 - 28 bar (14 bar Standard Setting)
W	10.5 - 315 bar (70 bar Standard Setting)

Z

OPTIONS

L	Leakproof hex. socket screw.	
K	Handknob with Lock Knob. (Order Code: 6ZAK001)	
C	Stainless Steel Tamper Resistant Cover.	