

Ordering Code: **RP-12W-X-Y-Z**

Control Option:
Maximum extension
from locating shoulder.
(Z=L Control shown)

4.0 Hex.

3/8"-24UNF-2A

14.27 Hex. (9/16 inch)
Torque 9 - 10 Nm
Apply CH (5JAA097)
Plastic tamper
resistant cover

Ø25

32.0 Hex.

1-1/16"-12UN-2A

Outlet ②

Inlet ①

L=56
K=63

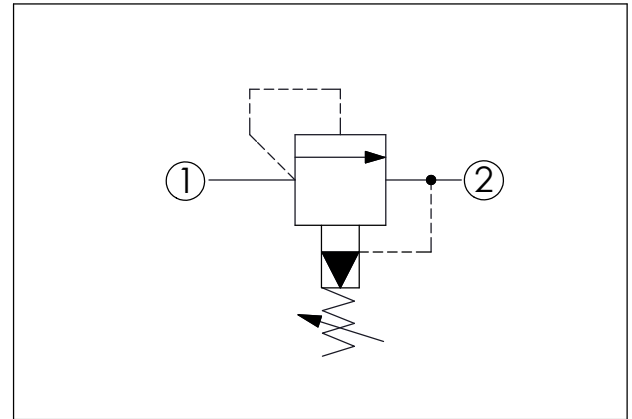
Locating
Shoulder

2

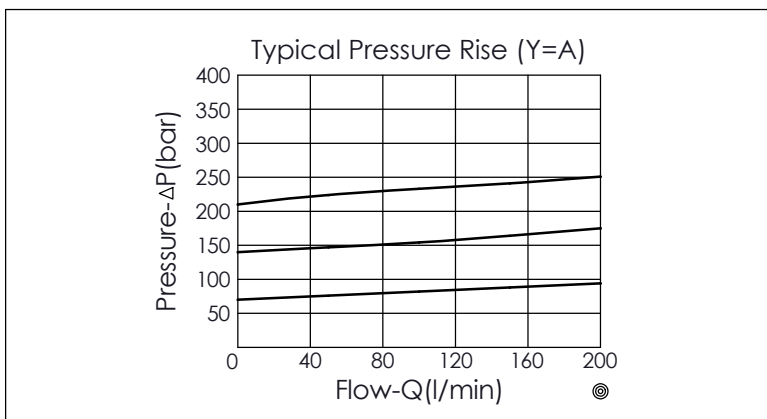
45.1

UNIT:mm

Illustrations / detail are
for reference only.
Data subject to change.



TECHNICAL DATA	
Max. Operating pressure:	350 bar
Rated flow:	200 l/min (Refer To Performance Chart)
Cavity-Tooling:	12W-2
Installation torque:	54 - 66 Nm
Weight:	0.287 (Z=L) kg
Will accept maximum pressure at port ②; suitable for use in cross port relief circuits. If used in cross port relief circuits, consider spool leakage.	



X	OPERATION	
26	① to ② (P to T)	
<ul style="list-style-type: none"> Response Time-Typical (10 ms) Maximum Leakage Approximately (50 cc/min./70 bar) 		

Y	SPRINGS	
	ADJUSTMENT RANGES	
A	7 - 210 bar	(70 bar Standard Setting)
B	3.5 - 105 bar	(70 bar Standard Setting)
C	10.5 - 420 bar	(70 bar Standard Setting)
D	1.7 - 55 bar	(28 bar Standard Setting)
E	1.7 - 28 bar	(14 bar Standard Setting)
N	4 - 55 bar	(28 bar Standard Setting)
Q	4 - 28 bar	(14 bar Standard Setting)
W	10.5 - 315 bar	(70 bar Standard Setting)

Z	OPTIONS	
L	Leakproof hex. socket screw.	
K	Handknob with Lock Knob. (Order Code: 6ZAK001)	
C	Stainless Steel Tamper Resistant Cover.	