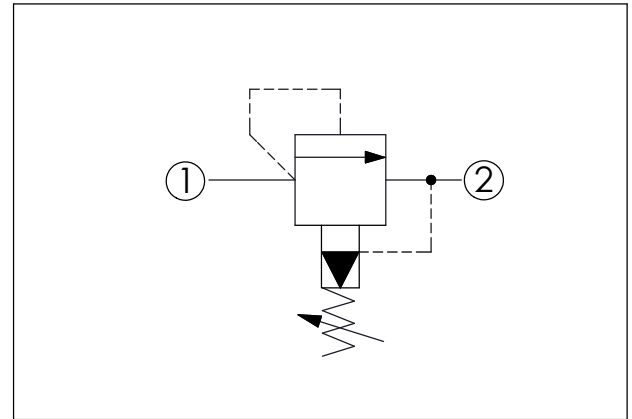
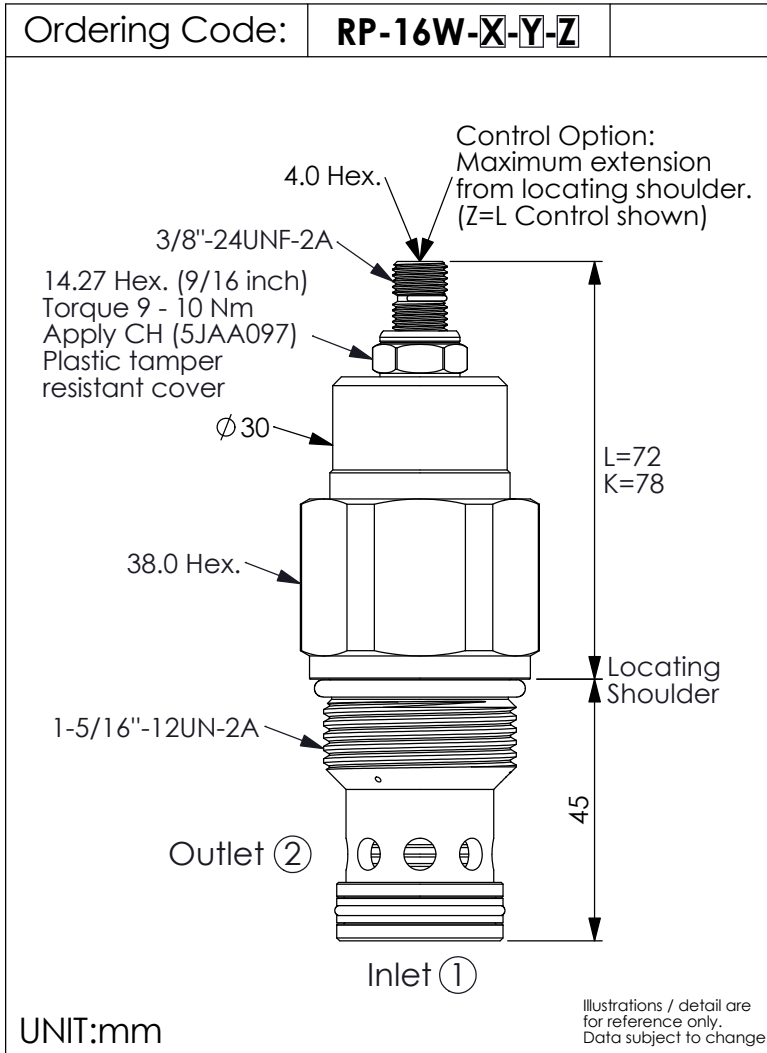


RELIEF VALVE (Pilot Operated Balanced Piston)



TECHNICAL DATA

Max. Operating pressure: 350 bar

Rated flow: 300 l/min
(Refer To Performance Chart)

Cavity-Tooling: 16W-2
(Recommend to use annular groove
at port ② when high flow rate)

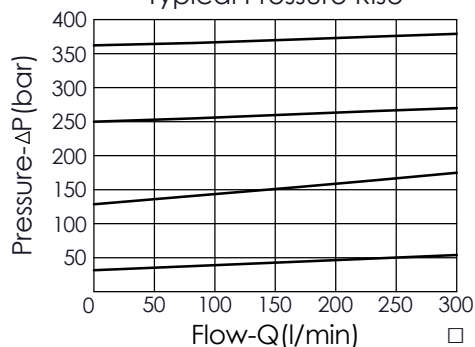
Installation torque: 80 - 100 Nm

Weight: 0.529 (Z=L) kg

Will accept maximum pressure at port ②;
suitable for use in cross port relief circuits.
If used in cross port relief circuits, consider
spool leakage.

Performance Chart

Typical Pressure Rise



X OPERATION

26 ① to ② (P to T)

- Response Time-Typical (10 ms)
- Maximum Leakage Approximately
(66 cc/min./70 bar)

Y

SPRINGS

ADJUSTMENT RANGES

A	7 - 210 bar (70 bar Standard Setting)
B	3.5 - 105 bar (70 bar Standard Setting)
C	10.5 - 420 bar (70 bar Standard Setting)
D	1.7 - 55 bar (28 bar Standard Setting)
E	1.7 - 28 bar (14 bar Standard Setting)
N	4 - 55 bar (28 bar Standard Setting)
Q	4 - 28 bar (14 bar Standard Setting)
W	10.5 - 315 bar (70 bar Standard Setting)

Z

OPTIONS

L	Leakproof hex. socket screw.	
K	Handknob with Lock Knob. (Order Code: 6ZAK001)	
C	Stainless Steel Tamper Resistant Cover.	