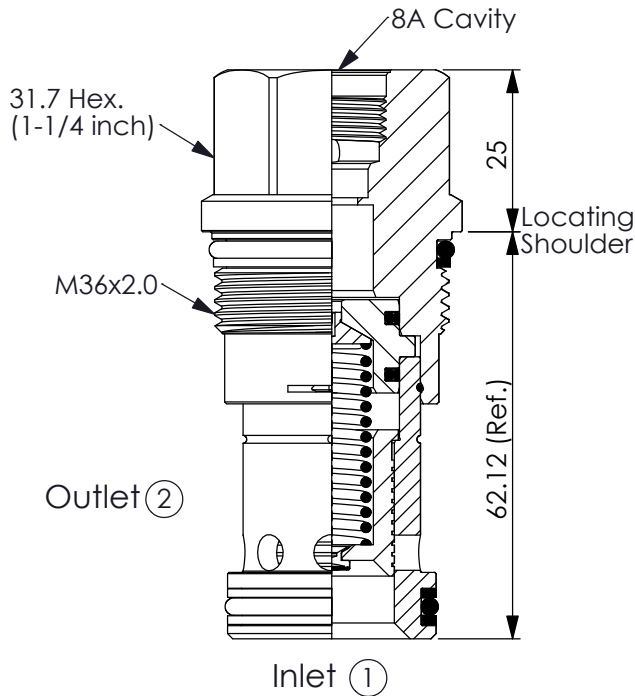


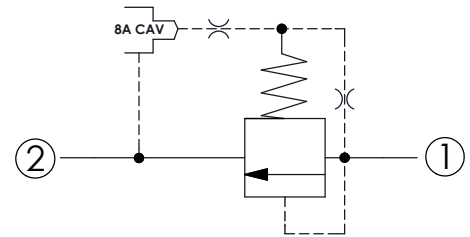
(Pilot operated, balanced piston relief main stage with integral 8A control cavity)

Ordering Code: **RP-16A-X-Y-8**



UNIT:mm

Illustrations / detail are for reference only. Data subject to change.



### TECHNICAL DATA

Max.Operating pressure: 350 bar

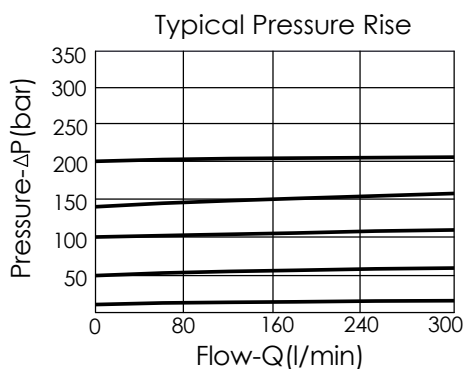
Rated flow: 380 l/min

Cavity-Tooling: 16A-2

Installation torque: 200 - 215 Nm

Weight: 0.43 kg

Will accept maximum pressure at port (2); suitable for use in cross port relief circuits. If used in cross port relief circuits, consider spool leakage.



### X OPERATION

**20** (1) to (2) (P to T)

- Response Time-Typical (10 ms)
- Maximum Leakage Approximately (66 cc/min./70 bar)

**Y**

### SPRINGS

MINIMUM CONTROL PRESSURE

**D**

1.7 bar (25 psi)

**W**

7 bar (100 psi)

W spring is suit for higher pressure drop application. Please consult our sales department.