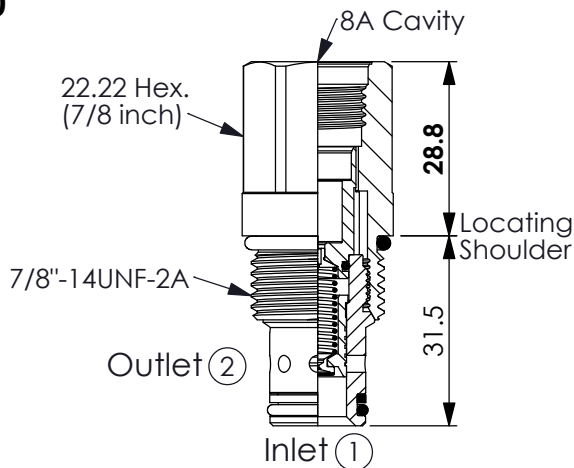


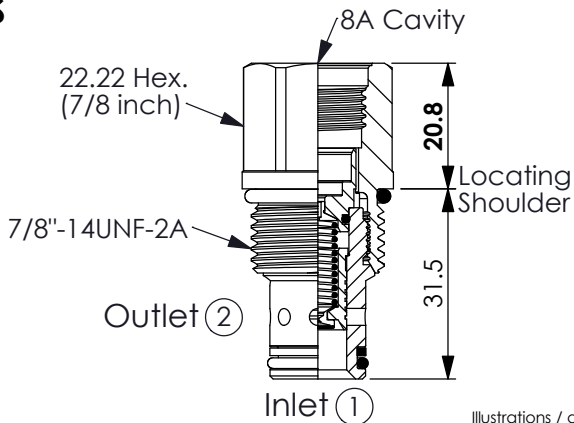
(Pilot operated, balanced piston relief main stage with integral 8A control cavity)

Ordering Code: **RP-10W-X-Y-8**

X=20

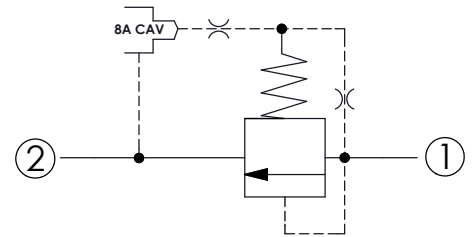


X=2S



UNIT:mm

Illustrations / detail are for reference only. Data subject to change.



TECHNICAL DATA

Max.Operating pressure: 350 bar

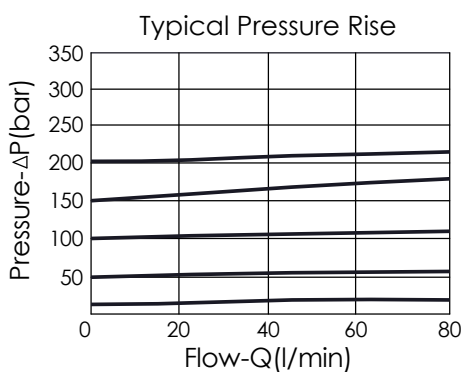
Rated flow: 95 l/min

Cavity-Tooling: 10W-2

Installation torque: 35 - 45 Nm

Weight: 0.112 (X=20) kg

Will accept maximum pressure at port ② but it is nessecery to install double back-up rings to valve for cross port relief circuit application. Leakage of spool should be concerned. If you have any questions, please contact Winner's sales department.



X OPERATION

20 ① to ② (P to T)
(Standard Type)

2S ① to ② (P to T)
(Short Type)

- Response Time-Typical (10 ms)
- Maximum Leakage Approximately (33 cc/min./70 bar)

Y

SPRINGS

MINIMUM CONTROL PRESSURE

D

1.7 bar (25 psi)

W

7 bar (100 psi)

W spring is suit for higher pressure drop application. Please consult our sales department.