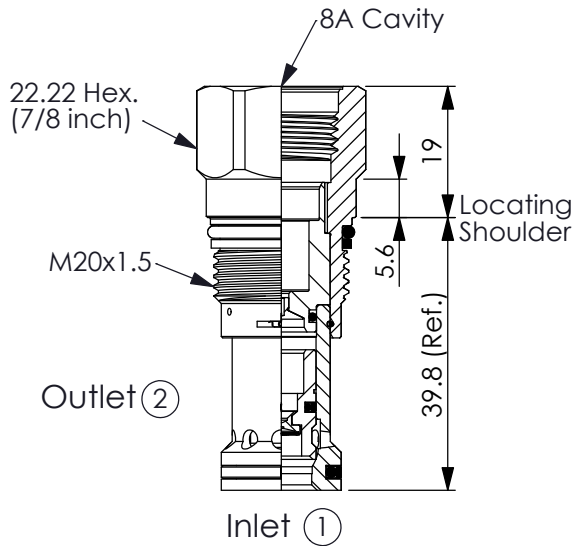


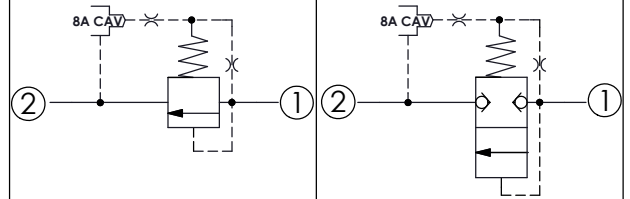
(Pilot Operated, Balanced Poppet Relief Main Stage With Integral 8A Control Cavity)

Ordering Code: **RP-10A-X-Y-8**



UNIT:mm

Illustrations / detail are for reference only. Data subject to change.



TECHNICAL DATA

Max. Operating pressure: 350 bar

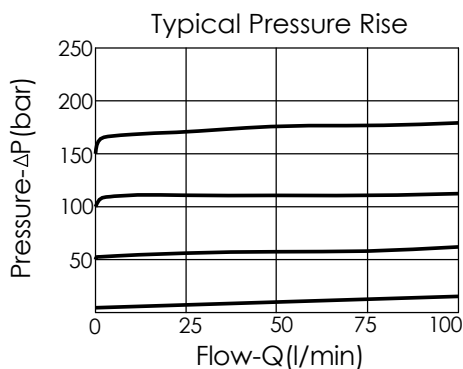
Rated flow: 95 l/min

Cavity-Tooling: 10A-2

Installation torque: 40 - 50 Nm

Weight: 0.09 kg

Will accept maximum pressure at port ②; suitable for use in cross port relief circuits.



X OPERATION

2G Balanced Poppet

- Response Time-Typical (2 ms)
- Maximum Leakage at 10% reset Approximately (0.7cc/min)
- If the pressure drop of relief valve is high, it easily occurs cavitation which cause noise and manifold erosion. In order to improve this situation, please select balanced poppet structure.

Y

SPRINGS

MINIMUM CONTROL PRESSURE

D

1.7 bar (25 psi)

W

7 bar (100 psi)

W spring is suit for higher pressure drop application. Please consult our sales department.