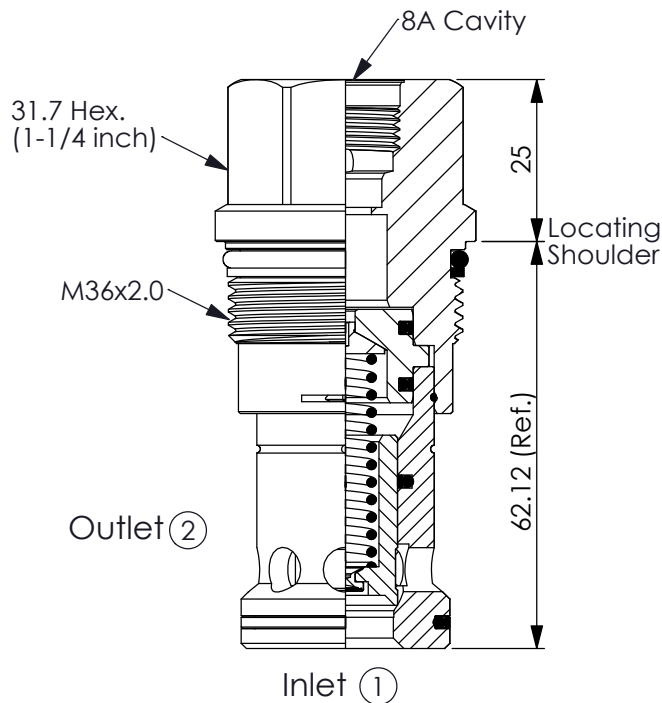


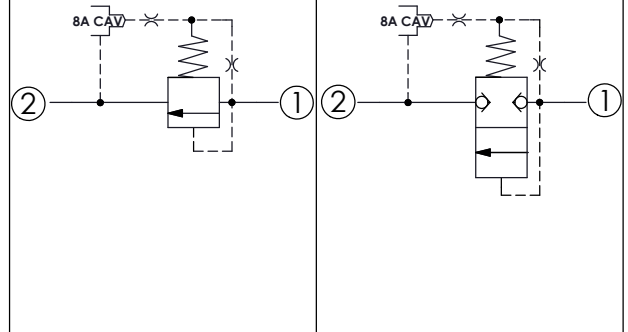
(Pilot Operated, Balanced Poppet Relief Main Stage With Integral 8A Control Cavity)

Ordering Code: **RP-16A-X-Y-8**



UNIT:mm

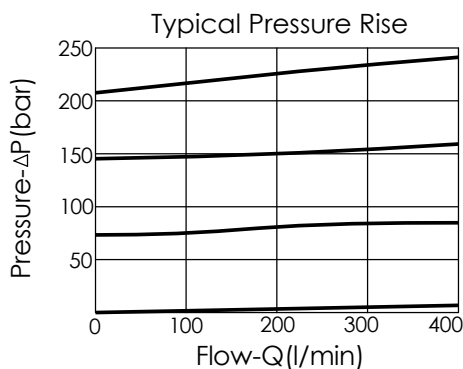
Illustrations / detail are for reference only. Data subject to change.



### TECHNICAL DATA

|                         |              |
|-------------------------|--------------|
| Max.Operating pressure: | 350 bar      |
| Rated flow:             | 380 l/min    |
| Cavity-Tooling:         | 16A-2        |
| Installation torque:    | 200 - 215 Nm |
| Weight:                 | 0.44 kg      |

Will accept maximum pressure at port ②; suitable for use in cross port relief circuits.



### X OPERATION

**2G** Balanced Poppet

- Response Time-Typical (2 ms)
- Maximum Leakage at 10% reseat Approximately (0.7cc/min)
- If the pressure drop of relief valve is high, it easily occurs cavitation which cause noise and manifold erosion. In order to improve this situation, please select balanced poppet structure.

**Y**

### SPRINGS

MINIMUM CONTROL PRESSURE

**B**

3.5 bar (50 psi)

**W**

7 bar (100 psi)

W spring is suit for higher pressure drop application. Please consult our sales department.