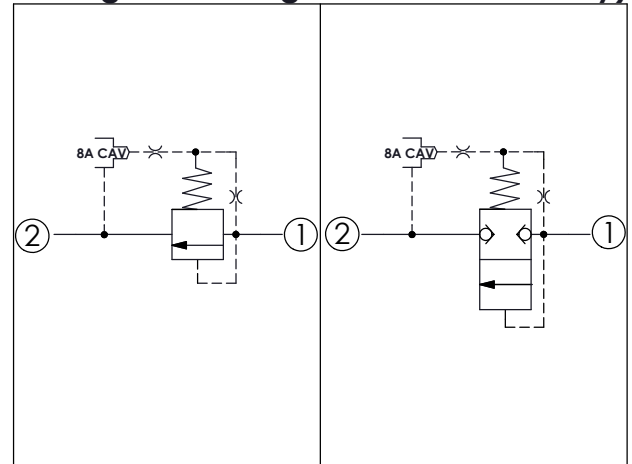
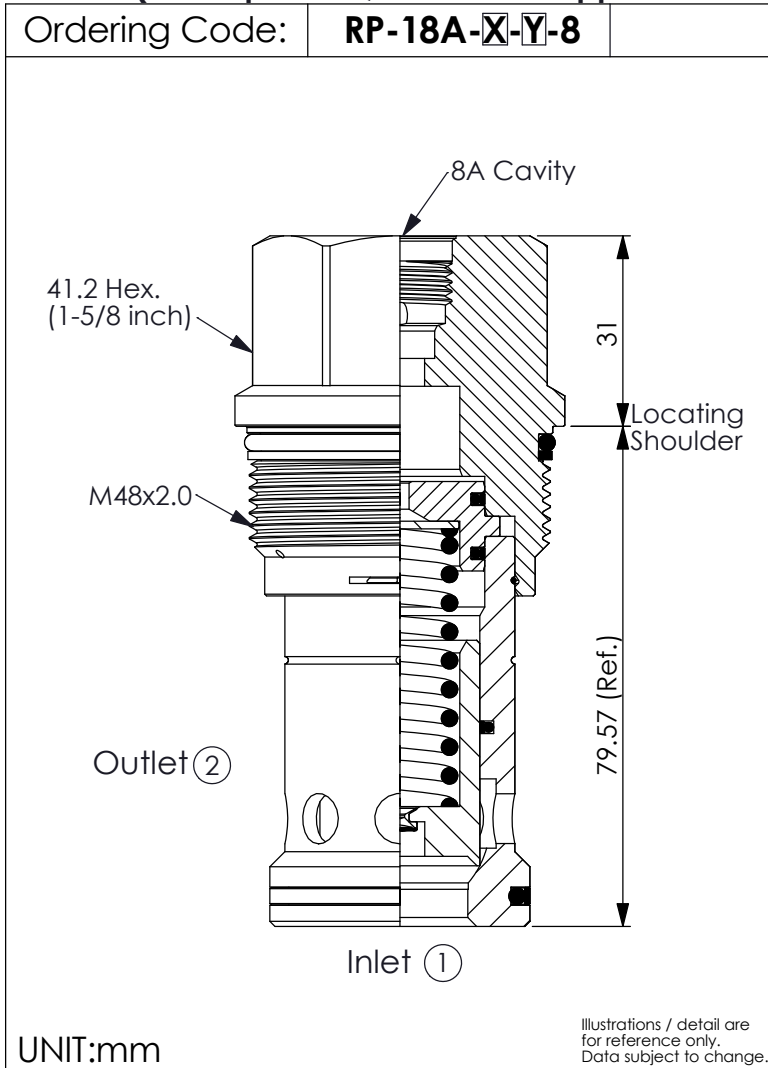


(Pilot Operated, Balanced Poppet Relief Main Stage With Integral 8A Control Cavity)



TECHNICAL DATA

Max. Operating pressure: 350 bar

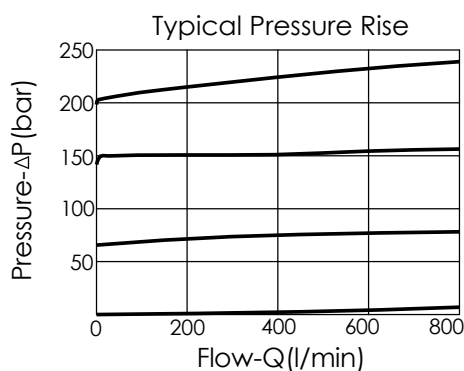
Rated flow: 760 l/min

Cavity-Tooling: 18A-2 (18AB-2)

Installation torque: 465 - 500 Nm

Weight: 0.93 kg

Will accept maximum pressure at port ②; suitable for use in cross port relief circuits.



X OPERATION

2G Balanced Poppet

- Response Time-Typical (2 ms)
- Maximum Leakage at 10% reseal Approximately (0.7cc/min)
- If the pressure drop of relief valve is high, it easily occurs cavitation which cause noise and manifold erosion. In order to improve this situation, please select balanced poppet structure.

Y SPRINGS

MINIMUM CONTROL PRESSURE

B 3.5 bar (50 psi)

W 7 bar (100 psi)

W spring is suit for higher pressure drop application. Please consult our sales department.