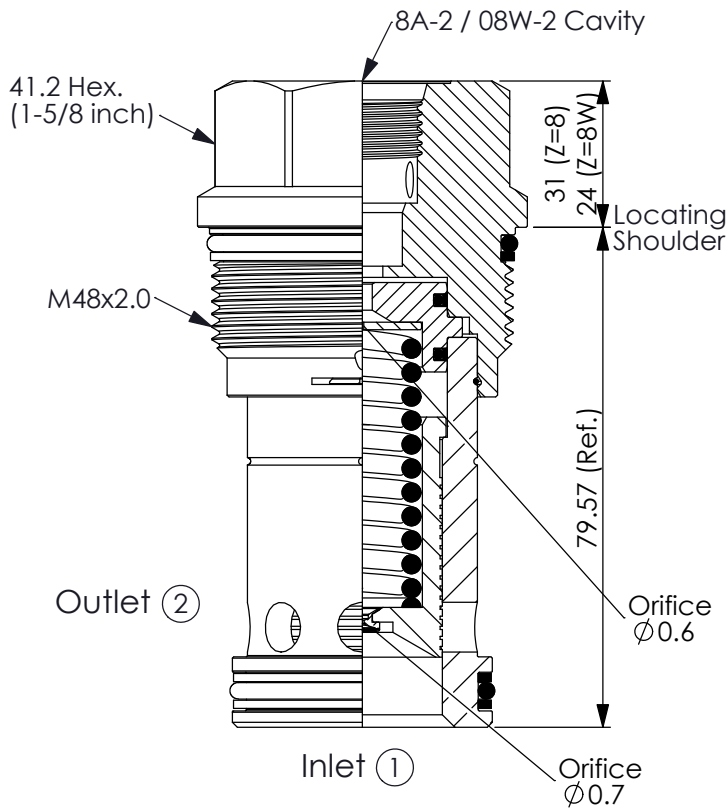


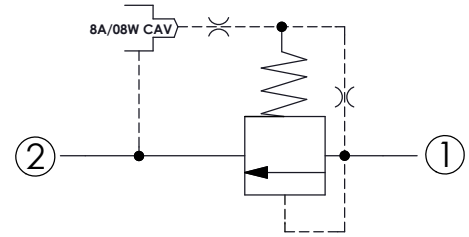
(Pilot operated, balanced piston relief main stage with integral 8A control cavity)

Ordering Code: **RP-18A-X-Y-Z-76**



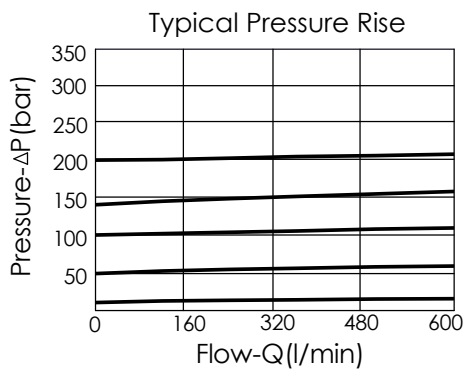
UNIT:mm

Illustrations / detail are for reference only. Data subject to change.



TECHNICAL DATA

Max. Operating pressure:	350 bar
Rated flow:	760 l/min
Cavity-Tooling:	18A-2 (18AB-2)
Installation torque:	465 - 500 Nm
Weight:	0.85 (Z=8W) kg
Will accept maximum pressure at port ②; suitable for use in cross port relief circuits. If used in cross port relief circuits, consider spool leakage.	



X OPERATION

20 ① to ② (P to T)

- Response Time-Typical (10 ms)
- Maximum Leakage Approximately (80 cc/min./70 bar)

Y

SPRINGS

MINIMUM CONTROL PRESSURE

D

1.7 bar (25 psi)

W

7 bar (100 psi)

W spring is suit for higher pressure drop application. Please consult our sales department.

Z

CAVITIES

8

8A-2 Cavity

8W

08W-2 Cavity