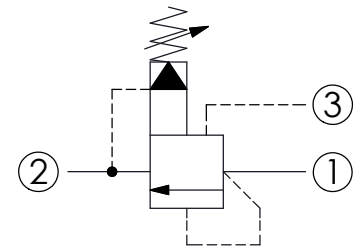
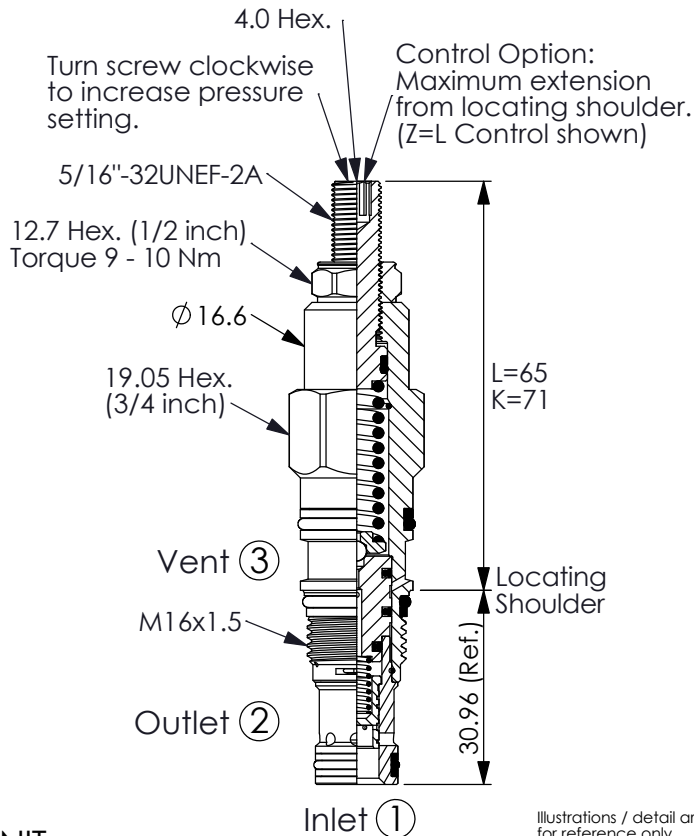


Ordering Code: **RV-163A-X-Y-Z**



TECHNICAL DATA

Max. Operating pressure: 350 bar

Rated flow: 30 l/min

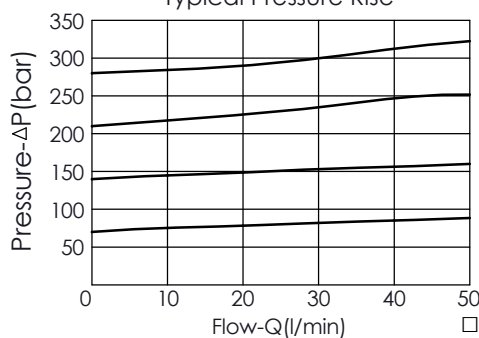
Cavity-Tooling: 163A-3

Installation torque: 27 - 33 Nm

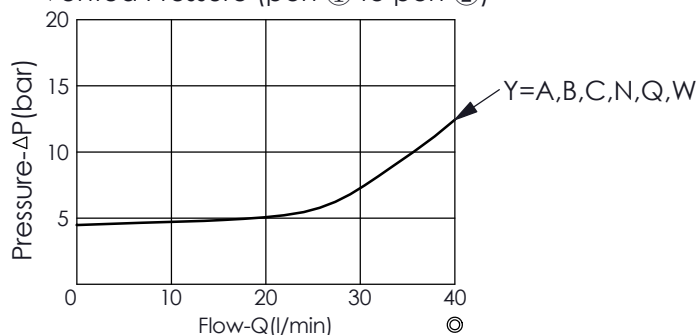
Weight: 0.109 (Z=L) kg

Will accept maximum pressure at port ②; suitable for use in cross port relief circuits. If used in cross port relief circuits, consider spool leakage.

Typical Pressure Rise



Vented Pressure (port ① to port ②)



X OPERATION

30 Standard Type


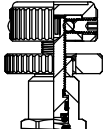
- Response Time-Typical (10 ms)
- Maximum Leakage Approximately (30 cc/min./70 bar)

SPRINGS

ADJUSTMENT RANGES

A	5 - 210 bar (70 bar Standard Setting)
B	5 - 105 bar (70 bar Standard Setting)
C	5 - 420 bar (70 bar Standard Setting)
N	5 - 55 bar (28 bar Standard Setting)
Q	5 - 28 bar (14 bar Standard Setting)
W	5 - 315 bar (70 bar Standard Setting)

Z OPTIONS

L	Leakproof hex. socket screw.	
K	Handknob with Lock Knob. (Order Code: 7ZAK001)	
C	Stainless Steel Tamper Resistant Cover.	