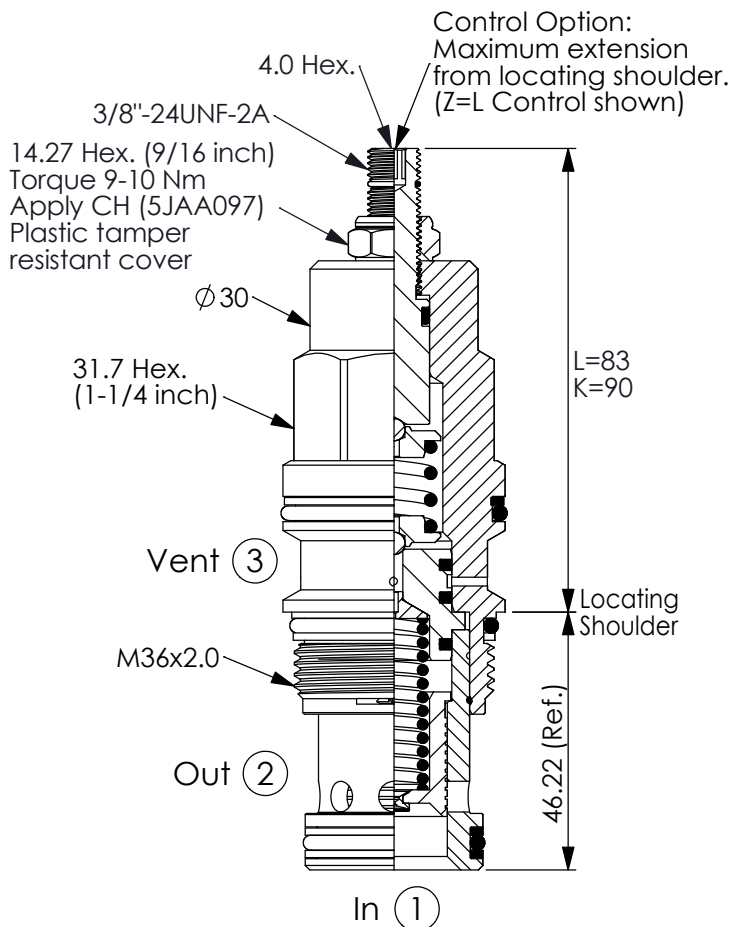
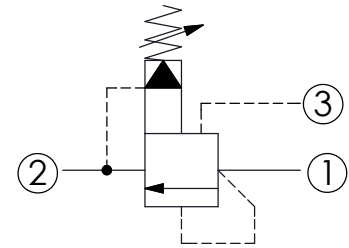


Ordering Code: **RV-17A-X-Y-Z**

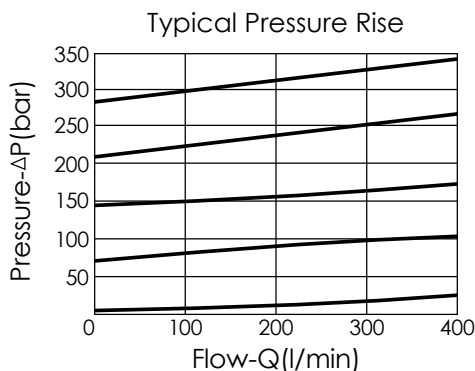


UNIT:mm



TECHNICAL DATA

Max. Operating pressure:	350 bar
Rated flow:	240 l/min
Cavity-Tooling:	17A-3
Installation torque:	200-215 Nm
Weight:	0.61 (Z=L) kg
Will accept maximum pressure at port ②; suitable for use in cross port relief circuits. If used in cross port relief circuits, consider spool leakage.	



X OPERATION

30 Standard Type

- Response Time-Typical (10 ms)
- Maximum Leakage Approximately (66 cc/min./70 bar)

Y

SPRINGS

ADJUSTMENT RANGES

A	7-210 bar (70 bar Standard Setting)
B	3.5-105 bar (70 bar Standard Setting)
C	10.5-420 bar (70 bar Standard Setting)
D	1.7-55 bar (28 bar Standard Setting)
E	1.7-28 bar (14 bar Standard Setting)
H	2-210 bar (70 bar Standard Setting)
W	10.5-315 bar (70 bar Standard Setting)

Z

OPTIONS

L	Leakproof hex. socket screw.	
K	Handknob with Lock Knob. (Order Code: 6ZAK001)	
C	Stainless Steel Tamper Resistant Cover.	