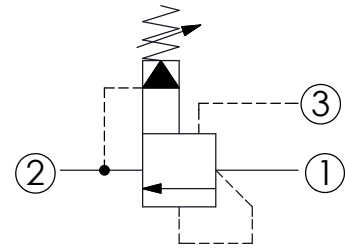
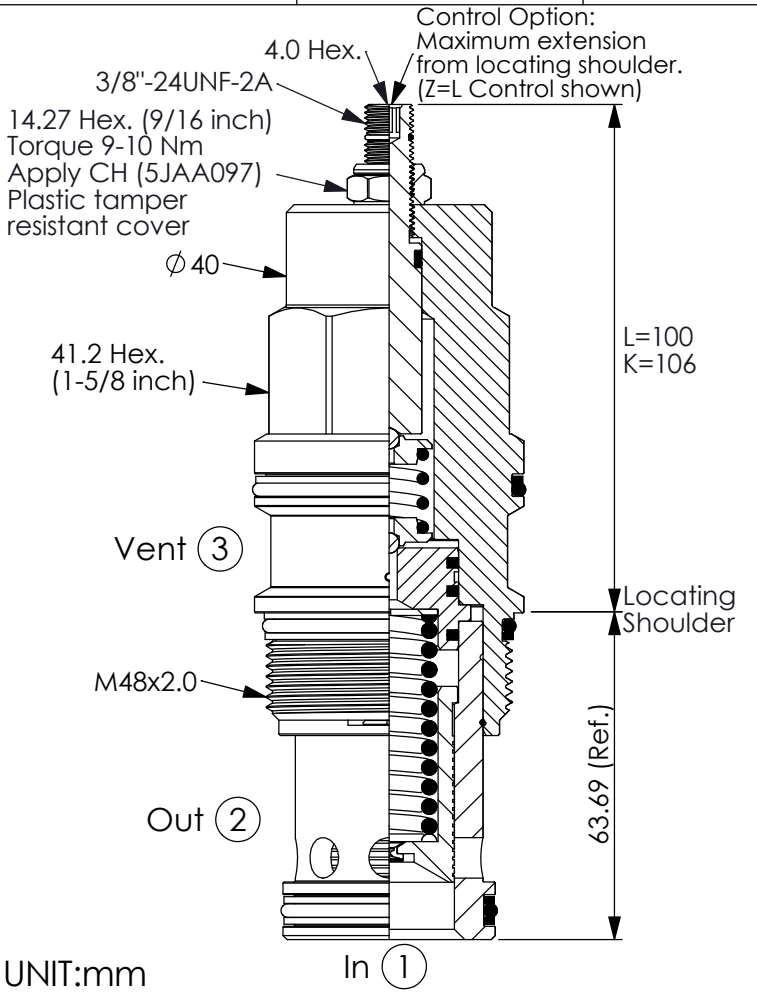


Ordering Code: **RV-19A-X-Y-Z**



TECHNICAL DATA

Max. Operating pressure: 350 bar

Rated flow: 480 l/min

Cavity-Tooling: 19A-3 (19AB-3)

Installation torque: 465-500 Nm

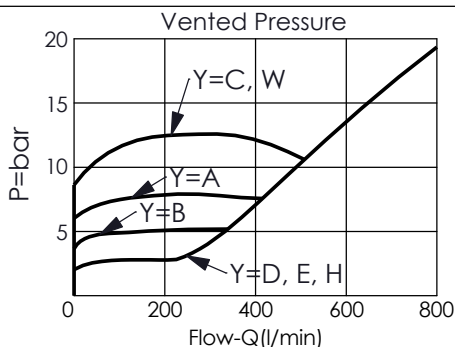
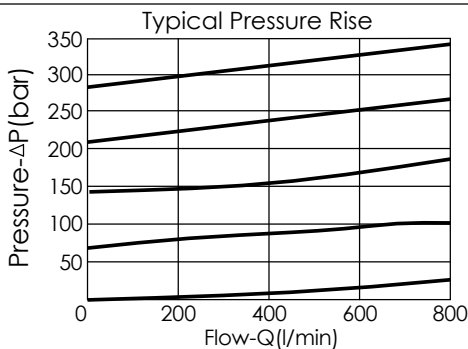
Weight: 1.43 (Z=L) kg

Will accept maximum pressure at port ② ; suitable for use in cross port relief circuits. If used in cross port relief circuits, consider spool leakage.

SPRINGS

ADJUSTMENT RANGES

Y	
A	7-210 bar (70 bar Standard Setting)
B	3.5-105 bar (70 bar Standard Setting)
C	10.5-420 bar (70 bar Standard Setting)
D	1.7-55 bar (28 bar Standard Setting)
E	1.7-28 bar (14 bar Standard Setting)
H	2-210 bar (70 bar Standard Setting)
W	10.5-315 bar (70 bar Standard Setting)



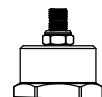
X OPERATION

30 Standard Type

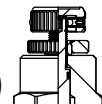
- Response Time-Typical (10 ms)
- Maximum Leakage Approximately (80 cc/min./70 bar)

Z OPTIONS

L Leakproof hex. socket screw.



K Handknob with Lock Knob. (Order Code: 6ZAK001)



C Stainless Steel Tamper Resistant Cover.

