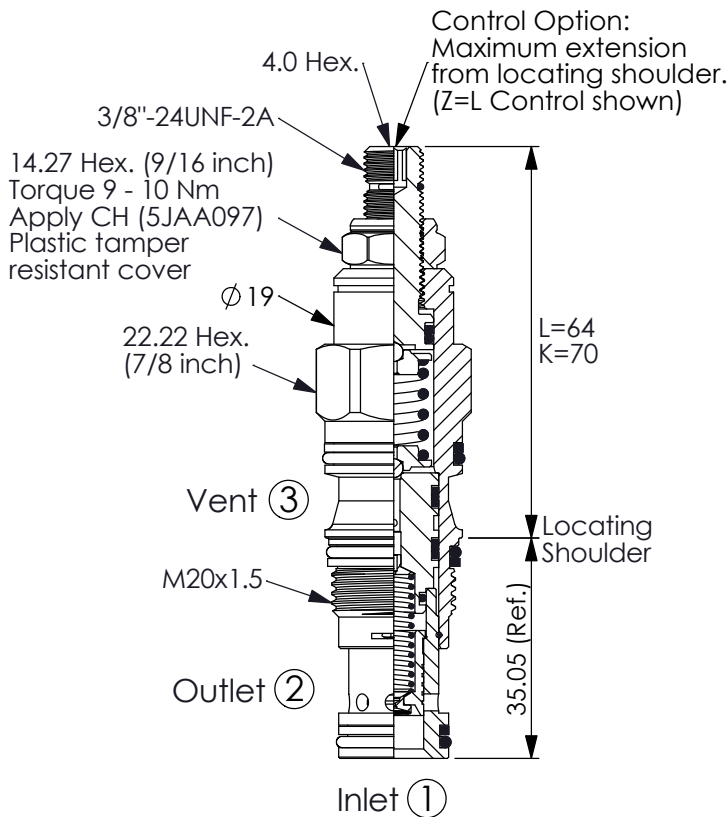
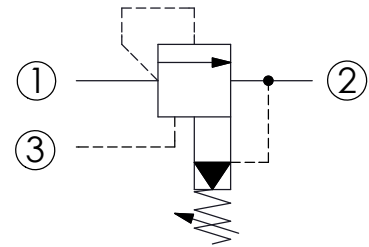


Ordering Code: **RV-11A-X-Y-Z-85**



UNIT:mm

Illustrations / detail are
for reference only.
Data subject to change.



TECHNICAL DATA

Max. Operating pressure: 350 bar

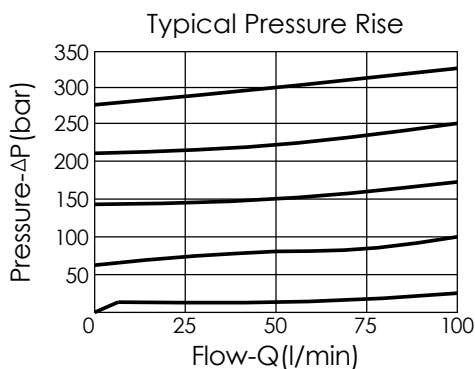
Rated flow: 60 l/min

Cavity-Tooling: 11A-3

Installation torque: 40 - 50 Nm

Weight: 0.15 (Z=L) kg

Will accept maximum pressure at port ② but it is necessary to install double back-up rings to valve for cross port relief circuit application. Leakage of spool should be concerned. If you have any questions, please contact Winner's sales department.



X OPERATION

30 Standard Type

- Response Time-Typical (10 ms)
- Maximum Leakage Approximately (33 cc/min./70 bar)

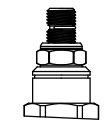
Y SPRINGS

ADJUSTMENT RANGES

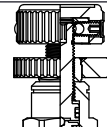
A	7 - 210 bar (70 bar Standard Setting)
B	3.5 - 105 bar (70 bar Standard Setting)
C	10.5 - 420 bar (70 bar Standard Setting)
D	1.7 - 55 bar (28 bar Standard Setting)
E	1.7 - 28 bar (14 bar Standard Setting)
H	2 - 210 bar (70 bar Standard Setting)
W	10.5 - 315 bar (70 bar Standard Setting)

Z OPTIONS

L Leakproof hex. socket screw.



K Handknob with Lock Knob.
(Order Code: 6ZAK001)



C Stainless Steel Tamper Resistant Cover.

