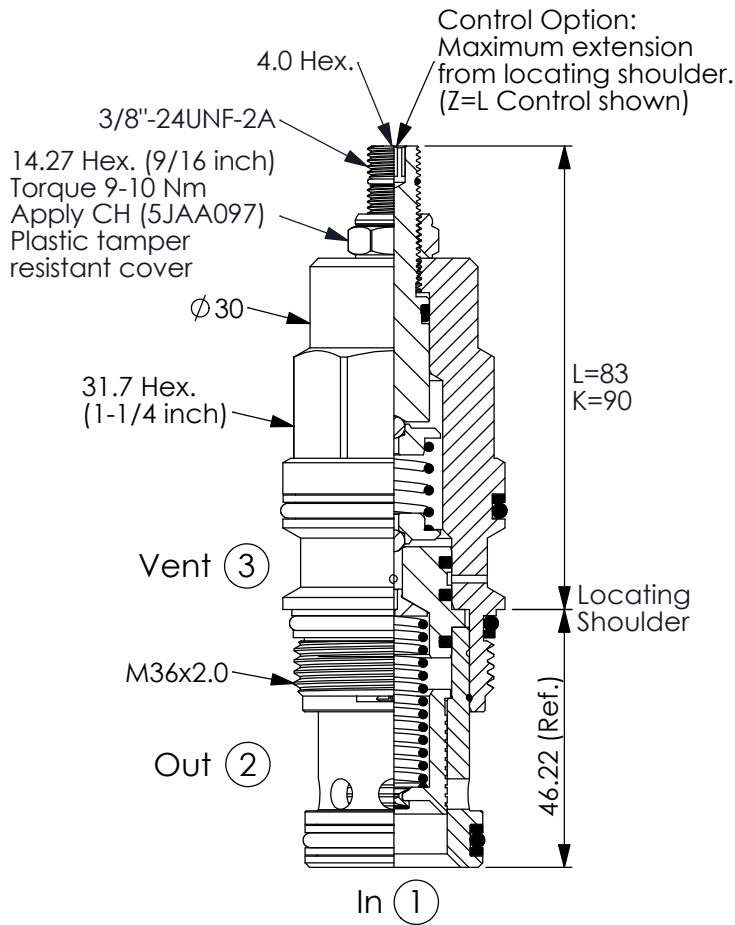
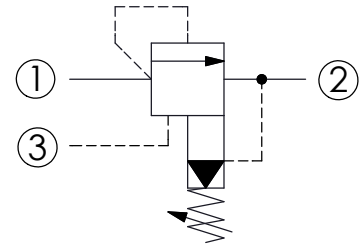


Ordering Code: **RV-17A-X-Y-Z-85**



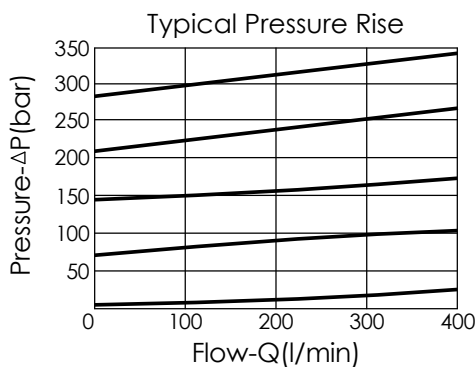
UNIT:mm



### TECHNICAL DATA

Max. Operating pressure:	350	bar
Rated flow:	240	l/min
Cavity-Tooling:	17A-3	
Installation torque:	200-215	Nm
Weight:	0.61 (Z=L)	kg

Will accept maximum pressure at port (2); suitable for use in cross port relief circuits. If used in cross port relief circuits, consider spool leakage.



### X OPERATION

**30** Standard Type

- Response Time-Typical (10 ms)
- Maximum Leakage Approximately (66 cc/min./70 bar)

**Y**

### SPRINGS

#### ADJUSTMENT RANGES

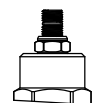
<b>A</b>	7-210 bar (70 bar Standard Setting)
<b>B</b>	3.5-105 bar (70 bar Standard Setting)
<b>C</b>	10.5-420 bar (70 bar Standard Setting)
<b>D</b>	1.7-55 bar (28 bar Standard Setting)
<b>E</b>	1.7-28 bar (14 bar Standard Setting)
<b>H</b>	2-210 bar (70 bar Standard Setting)
<b>W</b>	10.5-315 bar (70 bar Standard Setting)

**Z**

### OPTIONS

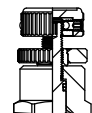
**L**

Leakproof hex. socket screw.



**K**

Handknob with Lock Knob.  
(Order Code: 6ZAK001)



**C**

Stainless Steel Tamper Resistant Cover.

