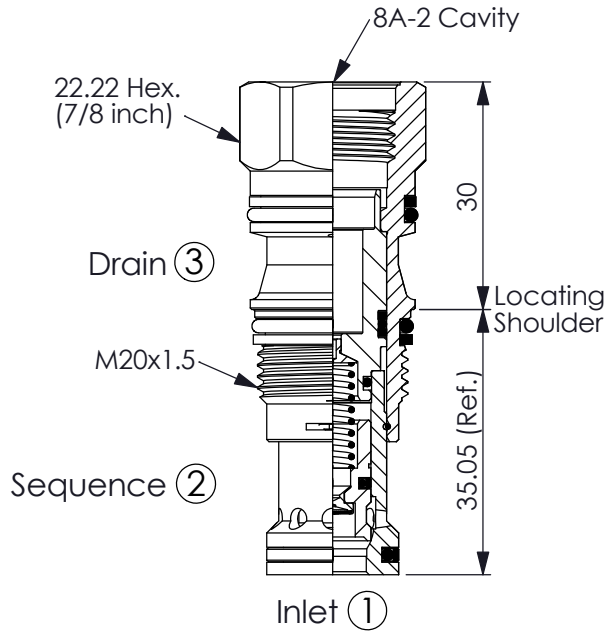
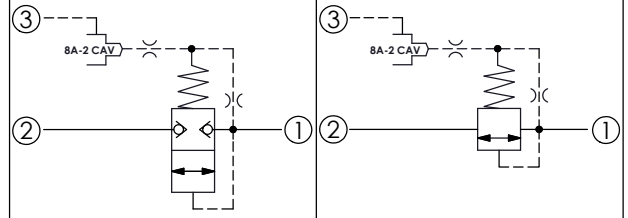


Ordering Code: **RV-11A-X-Y-8**



UNIT:mm

Illustrations / detail are for reference only. Data subject to change.



TECHNICAL DATA

Max. Operating pressure: 350 bar

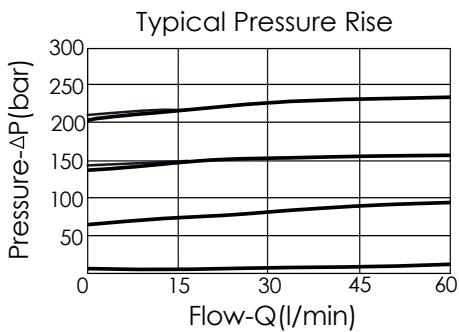
Rated flow: 60 l/min

Cavity-Tooling: 11A-3

Installation torque: 40 - 50 Nm

Weight: 0.10 kg

Will accept maximum pressure at port ②; suitable for use in cross port relief circuits.



X

OPERATION

3G

Balanced Poppet

- Response Time-Typical (10 ms)
- Maximum Leakage Approximately (0.7 cc/min.)
- Dirt tolerant
- If the pressure drop of relief valve is high, it easily occurs cavitation which cause noise and manifold erosion. In order to improve this situation, please select balanced poppet structure.

Y

SPRINGS

MINIMUM CONTROL PRESSURE

B

3.5 bar (50 psi)

W

7 bar (100 psi)

W spring is suit for higher pressure drop application. Please consult our sales department.