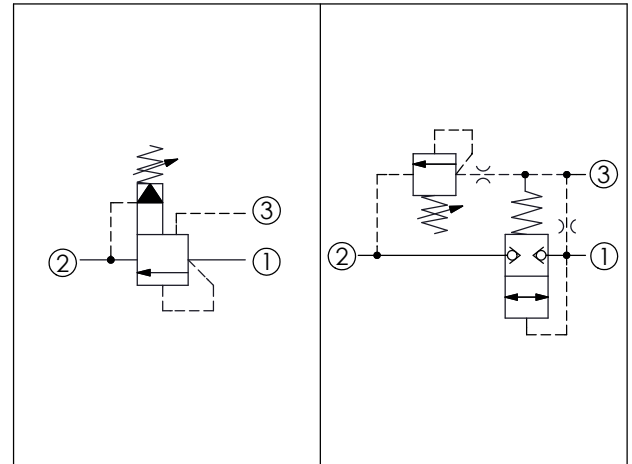


Ordering Code: **RV-11A-X-Y-Z-85**

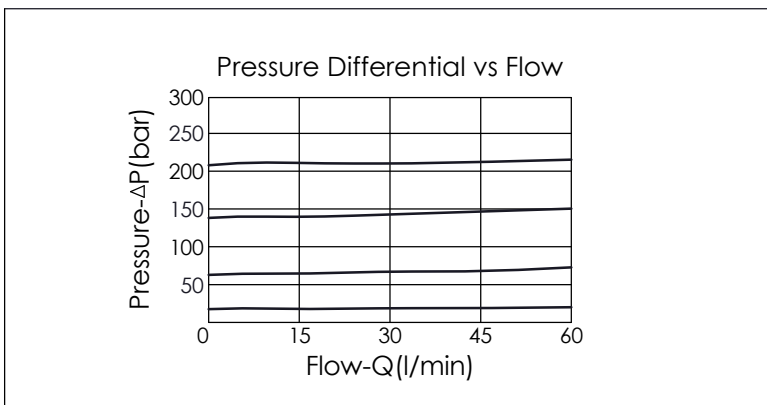
Control Option:
Maximum extension
from locating shoulder.
(Z=L Control shown)

4.0 Hex.
3/8"-24UNF-2A
14.27 Hex. (9/16 inch)
Torque 9-10 Nm
Apply CH (5JAA097)
Plastic tamper
resistant cover
Ø19
22.22 Hex.
(7/8 inch)
L=64
K=70
Vent ③
M20x1.5
Out ②
In ①
35.05 (Ref.)
Locating
Shoulder

UNIT:mm



TECHNICAL DATA	
Max. Operating pressure:	350 bar
Rated flow:	60 l/min
Cavity-Tooling:	11A-3
Installation torque:	40-50 Nm
Weight:	0.16 (Z=L) kg



X	OPERATION	
3G	Balanced Poppet	
	<ul style="list-style-type: none"> Response Time-Typical (2 ms) Maximum Leakage Approximately (0.7 cc/min./70 bar) Dirt tolerant If the pressure drop of relief valve is high, it easily occurs cavitation which cause noise and manifold erosion. In order to improve this situation, please select balanced poppet structure. 	

Y	SPRINGS	
	ADJUSTMENT RANGES	
A	7-210 bar	(70 bar Standard Setting)
B	3.5-105 bar	(70 bar Standard Setting)
C	10.5-420 bar	(70 bar Standard Setting)
N	4-55 bar	(28 bar Standard Setting)
Q	4-28 bar	(14 bar Standard Setting)
W	10.5-315 bar	(70 bar Standard Setting)

Z	OPTIONS	
L	Leakproof hex. socket screw.	
K	Handknob with Lock Knob. (Order Code: 6ZAK001)	
C	Stainless Steel Tamper Resistant Cover.	