

Ordering Code: **RV-2A-X-Y-Z-85**

Control Option:
Maximum extension
from locating shoulder.
(Z=L Control shown)

4.0 Hex.

3/8"-24UNF-2A

14.27 Hex. (9/16 inch)
Torque 9-10 Nm
Apply CH (5JAA097)
Plastic tamper
resistant cover

∅ 25

28.57 Hex.
(1-1/8 inch)

Vent ③

1.0"-14UNS-2A

Out ②

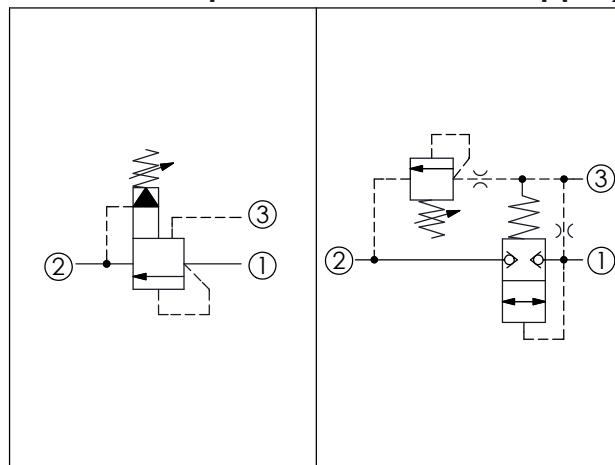
In ①

L=71
K=78

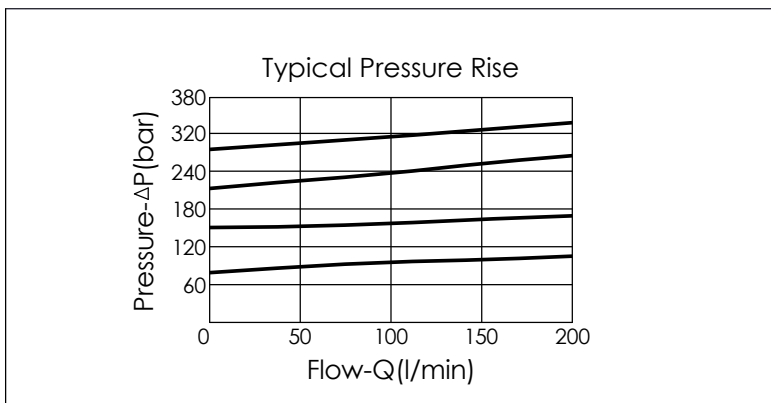
Locating
Shoulder

35.12 (Ref.)

UNIT:mm



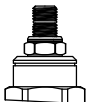
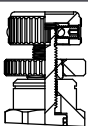
TECHNICAL DATA	
Max. Operating pressure:	350 bar
Rated flow:	95 l/min
Cavity-Tooling:	2A-3
Installation torque:	60-70 Nm
Weight:	0.29 (Z=L) kg



X	OPERATION
3G	Balanced Poppet

- Response Time-Typical (2 ms)
- Maximum Leakage Approximately (0.7 cc/min./70 bar)
- Dirt tolerant
- If the pressure drop of relief valve is high, it easily occurs cavitation which cause noise and manifold erosion. In order to improve this situation, please select balanced poppet structure.

Y	SPRINGS	
	ADJUSTMENT RANGES	
A	7-210 bar	(70 bar Standard Setting)
B	3.5-105 bar	(70 bar Standard Setting)
C	10.5-420 bar	(70 bar Standard Setting)
N	4-55 bar	(28 bar Standard Setting)
Q	4-28 bar	(14 bar Standard Setting)
W	10.5-315 bar	(70 bar Standard Setting)

Z	OPTIONS
L	Leakproof hex. socket screw. 
K	Handknob with Lock Knob. (Order Code: 6ZAK001) 
C	Stainless Steel Tamper Resistant Cover. 