

Ordering Code: **RV-11A-X-Y-Z**

Control Option:
Maximum extension
from locating shoulder.
(Z=L Control shown)

3/8"-24UNF-2A

4.0 Hex.

14.27 Hex. (9/16 inch)
Torque 9 - 10 Nm
Apply CH (5JAA097)
Plastic tamper
resistant cover

22.22 Hex.
(7/8 inch)

35.05 (Ref.)

Locating
Shoulder

Sense ③

M20x1.5

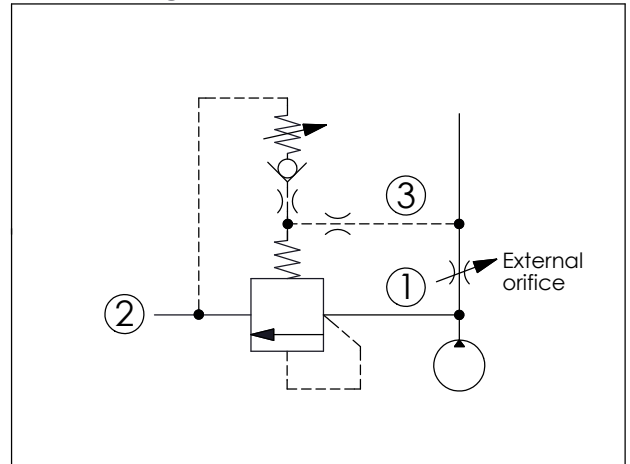
Bypass ②

Inlet ①

L=64
K=70

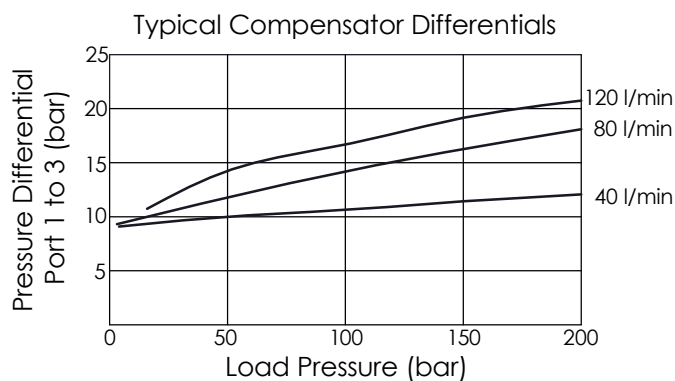
UNIT:mm

Illustrations / detail are
for reference only.
Data subject to change.



TECHNICAL DATA

Max. Operating pressure:	350 bar
Rated flow:	40 l/min
Cavity-Tooling:	11A-3
Installation torque:	40 - 50 Nm
Weight:	0.15 (Z=L) kg



X OPERATION

3B Piston Without Orifice
Compensating Pressure
is 7 bar

- Response Time-Typical (10 ms)
- Maximum Leakage Approximately (30 cc/min./70 bar)

Y

SPRINGS

ADJUSTMENT RANGES

A	7 - 210 bar (70 bar Standard Setting)
B	3.5 - 105 bar (70 bar Standard Setting)
C	10.5 - 420 bar (70 bar Standard Setting)
W	10.5 - 315 bar (70 bar Standard Setting)

Z

OPTIONS

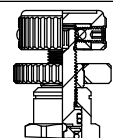
L

Leakproof hex.
socket screw.



K

Handknob with
Lock Knob.
(Order Code: 6ZAK001)



C

Stainless Steel
Tamper Resistant
Cover.

