

RELIEF VALVE (Modulating Element With Relief Function)

Ordering Code: **RV-2A-X-Y-Z**

Control Option:
Maximum extension
from locating shoulder.
(Z=L Control shown)

4.0 Hex.

3/8"-24UNF-2A

14.27 Hex. (9/16 inch)
Torque 9 - 10 Nm
Apply CH (5JAA097)
Plastic tamper
resistant cover

Ø 25

28.57 Hex.
(1-1/8 inch)

Sense ③

1.0"-14UNS-2A

Bypass ②

Inlet ①

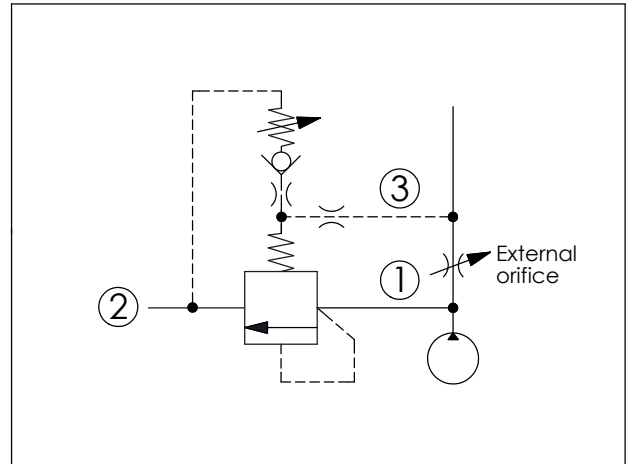
Locating
Shoulder

35.12 (Ref.)

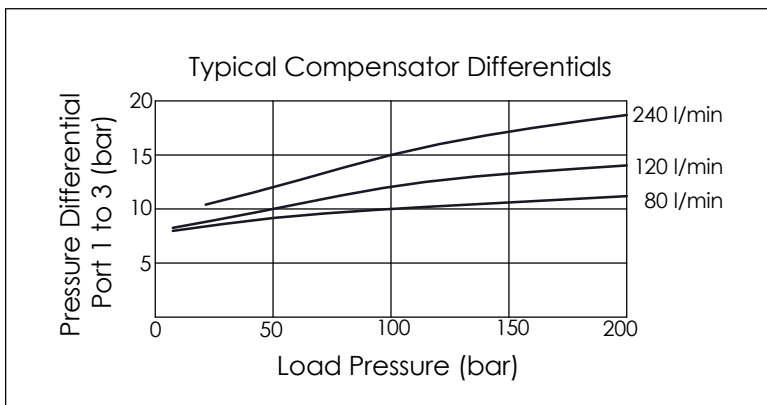
L=71
K=78

UNIT:mm

Illustrations / detail are
for reference only.
Data subject to change.



TECHNICAL DATA	
Max. Operating pressure:	350 bar
Rated flow:	80 l/min
Cavity-Tooling:	2A-3
Installation torque:	60 - 70 Nm
Weight:	0.29 (Z=L) kg



X	OPERATION	
3B	Piston Without Orifice Compensating Pressure is 8 bar	
	<ul style="list-style-type: none"> Response Time-Typical (10 ms) Maximum Leakage Approximately (50 cc/min./70 bar) 	

Y	SPRINGS	
	ADJUSTMENT RANGES	
A	7 - 210 bar	(70 bar Standard Setting)
C	7 - 420 bar	(70 bar Standard Setting)
W	7 - 315 bar	(70 bar Standard Setting)

Z	OPTIONS	
L	Leakproof hex. socket screw.	
K	Handknob with Lock Knob. (Order Code: 6ZAK001)	
C	Stainless Steel Tamper Resistant Cover.	