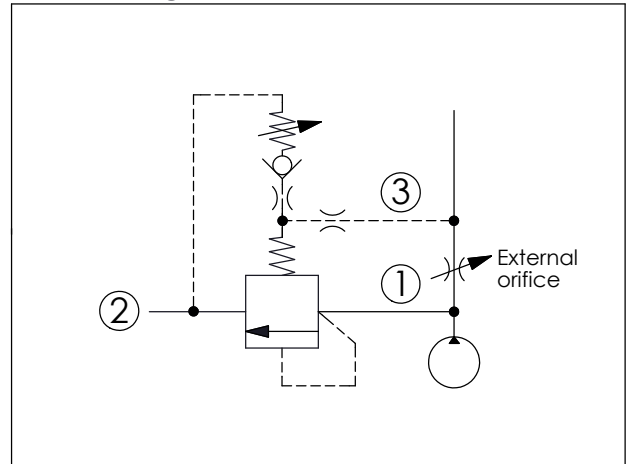
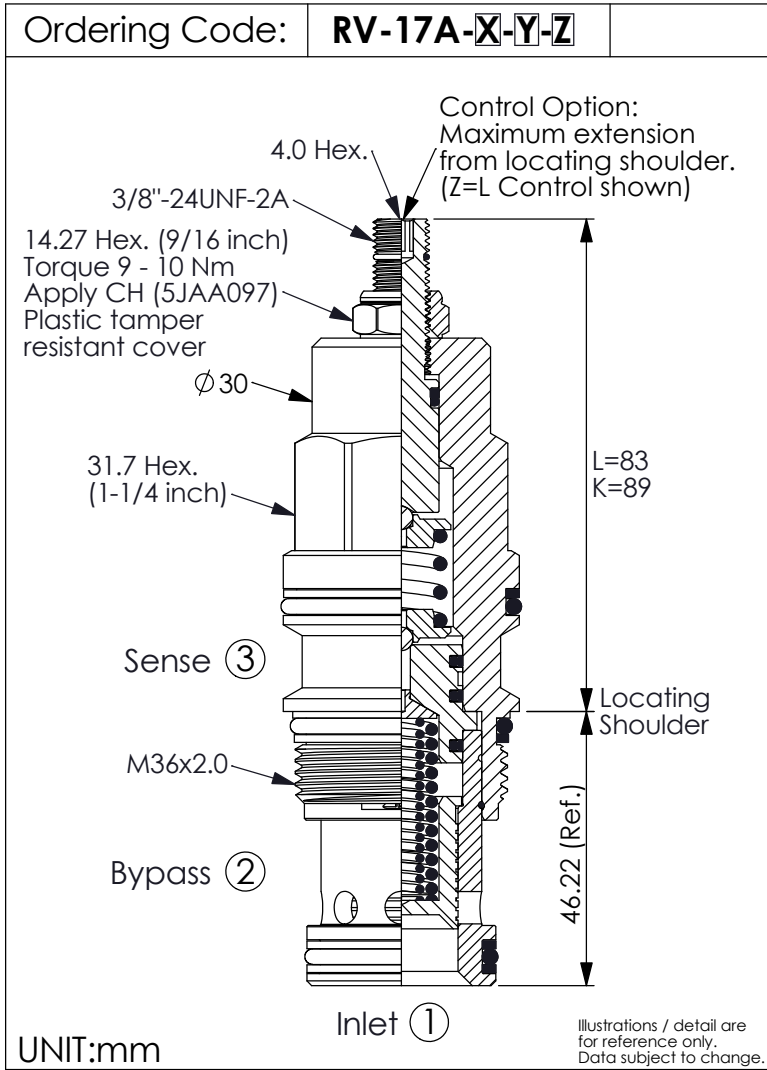
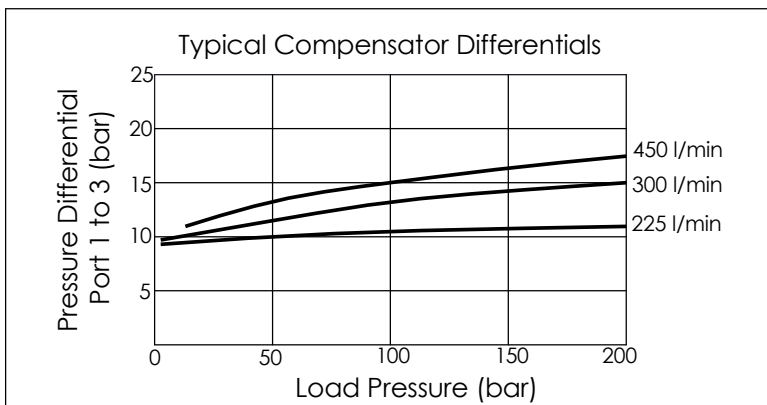


RELIEF VALVE (Modulating Element With Relief Function)



TECHNICAL DATA	
Max. Operating pressure:	350 bar
Rated flow:	160 l/min
Cavity-Tooling:	17A-3
Installation torque:	200 - 215 Nm
Weight:	0.62 (Z=L) kg



X	OPERATION	
3B	Piston Without Orifice	
	Compensating Pressure is 8 bar	
	<ul style="list-style-type: none"> Response Time-Typical (10 ms) Maximum Leakage Approximately (60 cc/min./70 bar) 	

Y	SPRINGS	
	ADJUSTMENT RANGES	
A	7 - 210 bar	(70 bar Standard Setting)
B	10.5 - 105 bar	(70 bar Standard Setting)
C	10.5 - 420 bar	(70 bar Standard Setting)
W	10.5 - 315 bar	(70 bar Standard Setting)

Z	OPTIONS	
L	Leakproof hex. socket screw.	
K	Handknob with Lock Knob. (Order Code: 6ZAK001)	
C	Stainless Steel Tamper Resistant Cover.	