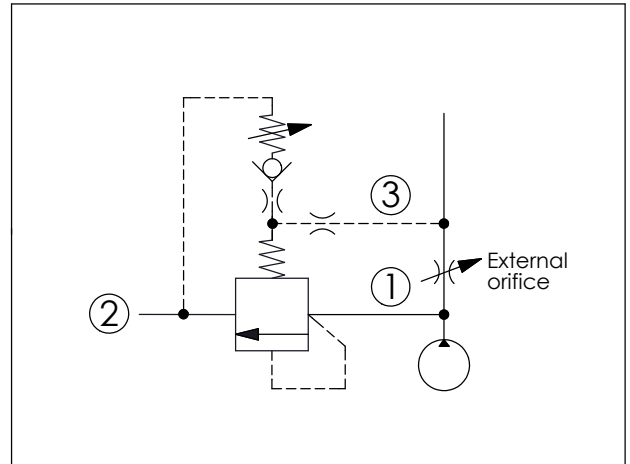
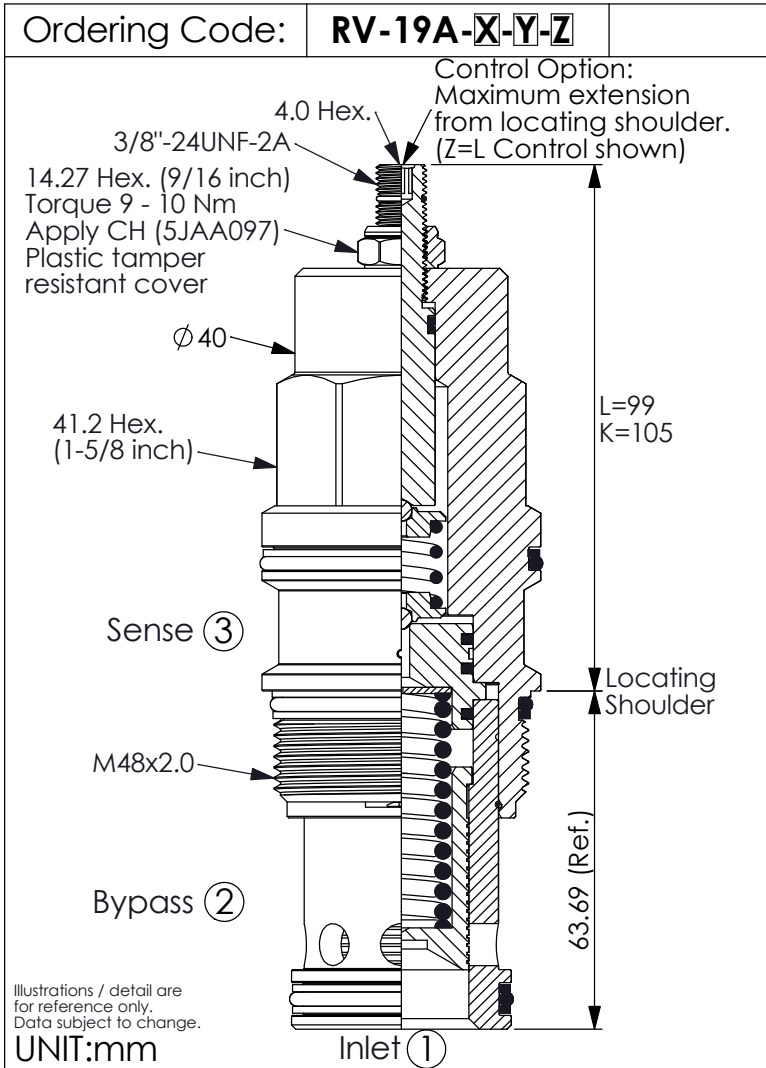
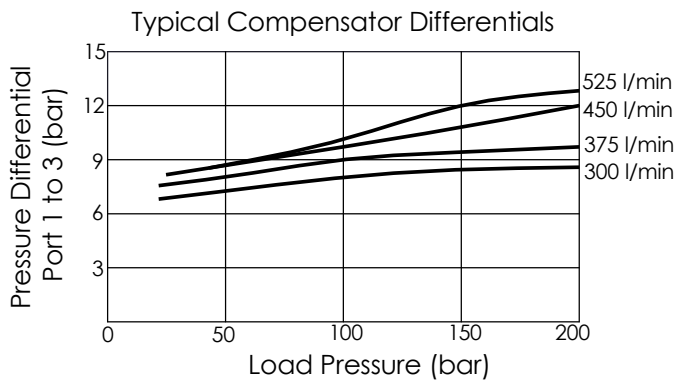


## RELIEF VALVE (Modulating Element With Relief Function)



### TECHNICAL DATA

Max. Operating pressure:	350 bar
Rated flow:	320 l/min
Cavity-Tooling:	19A-3 (19AB-3)
Installation torque:	465 - 500 Nm
Weight:	1.41 (Z=L) kg



### X OPERATION

**3B** Piston Without Orifice  
Compensating Pressure  
is 6 bar

- Response Time-Typical (10 ms)
- Maximum Leakage Approximately (80 cc/min./70 bar)

### Y SPRINGS ADJUSTMENT RANGES

<b>A</b>	7 - 210 bar (70 bar Standard Setting)
<b>B</b>	3.5 - 105 bar (70 bar Standard Setting)
<b>C</b>	10.5 - 420 bar (70 bar Standard Setting)

### Z OPTIONS

<b>L</b>	Leakproof hex. socket screw.	
<b>K</b>	Handknob with Lock Knob. (Order Code: 6ZAK001)	
<b>C</b>	Stainless Steel Tamper Resistant Cover.	