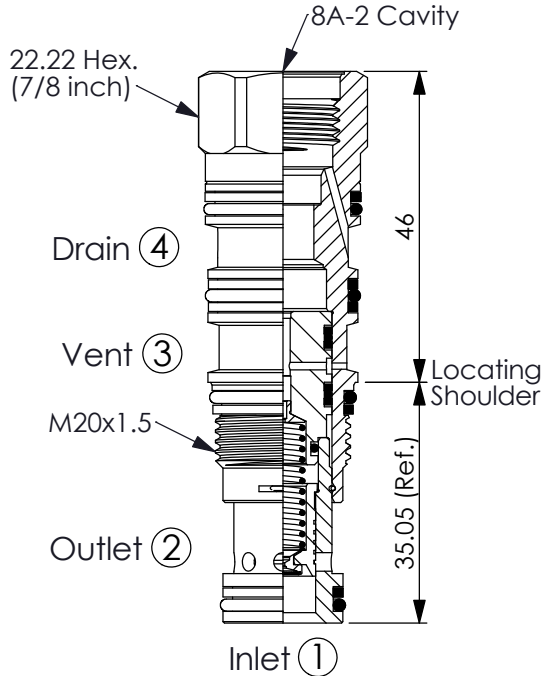
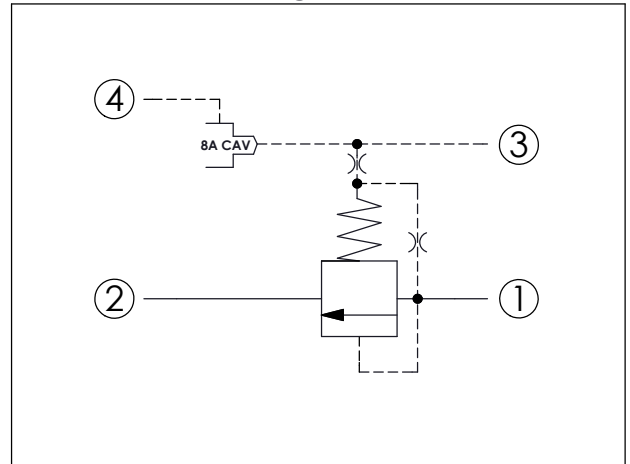


Ordering Code: **RV-21A-X-Y-8**



UNIT:mm

Illustrations / detail are for reference only. Data subject to change.



TECHNICAL DATA

Max. Operating pressure: 350 bar

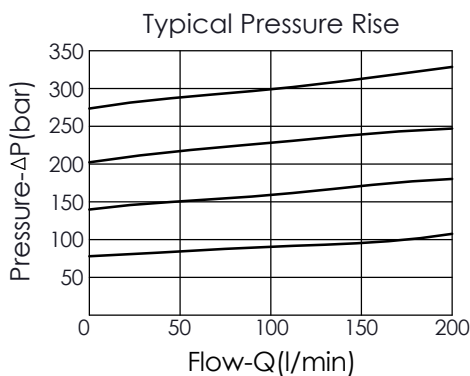
Rated flow: 60 l/min

Cavity-Tooling: 21A-4

Installation torque: 40 - 50 Nm

Weight: 0.14 kg

Will accept maximum pressure at port ② but it is necessary to install double back-up rings to valve for cross port relief circuit application. Leakage of spool should be concerned. If you have any questions, please contact Winner's sales department.



X OPERATION

40 Standard Type

- Response Time-Typical (10 ms)
- Maximum Leakage Approximately (30 cc/min./70 bar)

Y

SPRINGS

MINIMUM CONTROL PRESSURE

D

1.7 bar (25 psi)

W

7 bar (100 psi)

W spring is suit for higher pressure drop application. Please consult our sales department.

Z

CAVITIES

8

8A-2 Cavity

- applications: please refer to **PRA-8A-2D-Y-Z-74**、**PRB-8A-2D-Y-Z**
- Any technical questions, please feel free to consult with our sales dept.