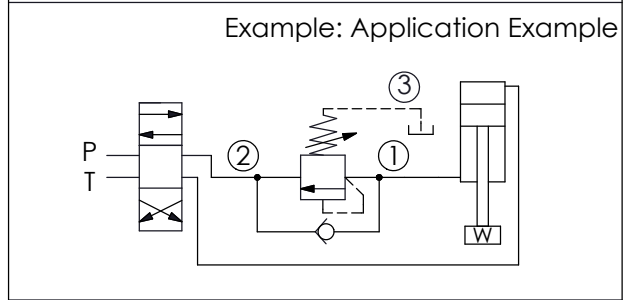
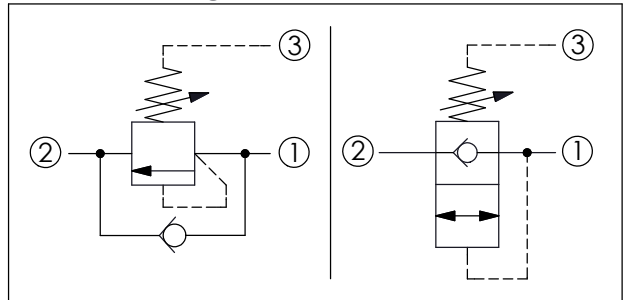
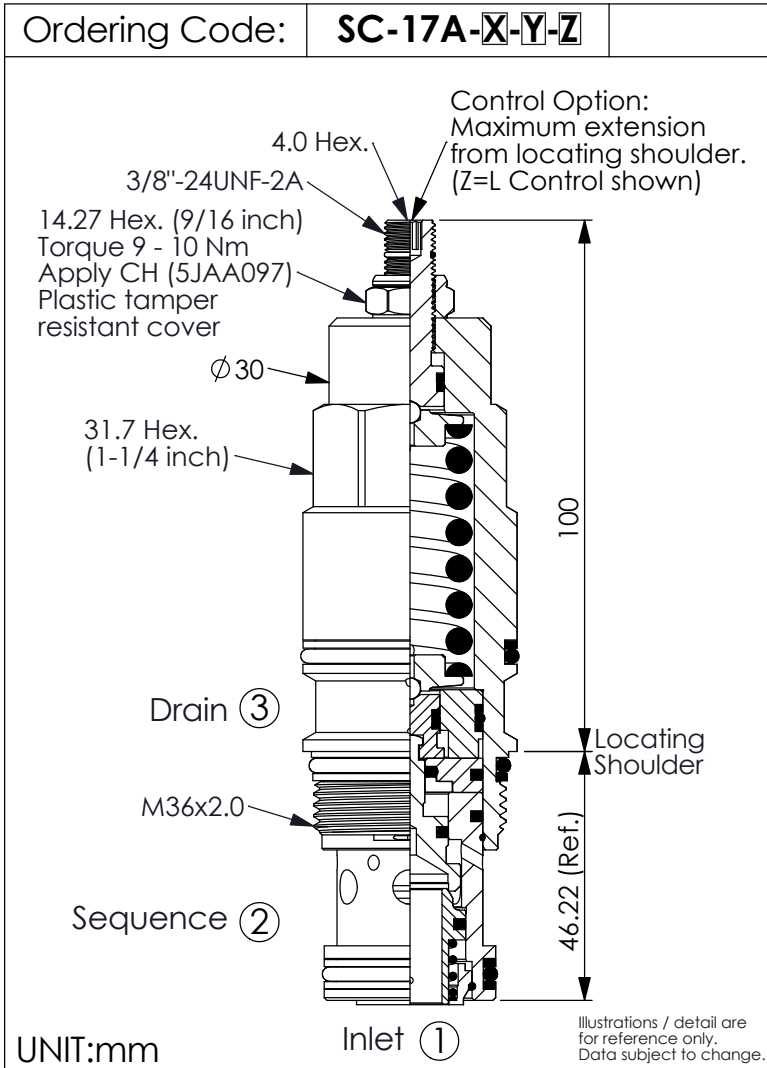
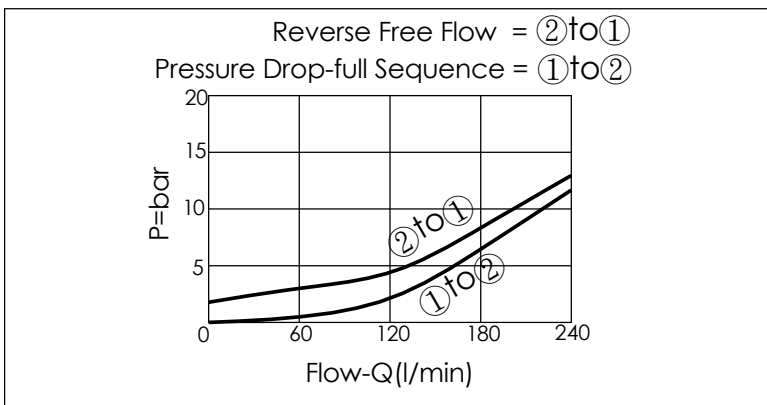


SEQUENCE VALVE (Direct Acting with Reverse Flow Check)



TECHNICAL DATA	
Max. Operating pressure:	350 bar
Rated flow:	240 l/min
Cavity-Tooling:	17A-3
Installation torque:	200 - 215 Nm
Weight:	0.711 (Z=L) kg



X	OPERATION
30	Standard Type
<ul style="list-style-type: none"> Response Time-Typical (2 ms) Maximum Leakage Approximately (0.7 cc/min.) 	

Z	OPTIONS
L	Leakproof hex. socket screw.
LP	Leakproof hex. socket screw. With stainless steel external metal components
C	Stainless Steel Tamper Resistant Cover.
K	Handknob with Lock Knob. (Order Code: 6ZAK001)

Y	SPRINGS	
	ADJUSTMENT RANGES	
A	35 - 210 bar	(70 bar Standard Setting)
B	20 - 105 bar	(70 bar Standard Setting)
C	140 - 420 bar	(140 bar Standard Setting)
D	14 - 55 bar	(28 bar Standard Setting)
E	7 - 28 bar	(14 bar Standard Setting)
W	55 - 315 bar	(70 bar Standard Setting)

※ Port ② to Port ① Check Valve Cracking Pressure 2.8 bar