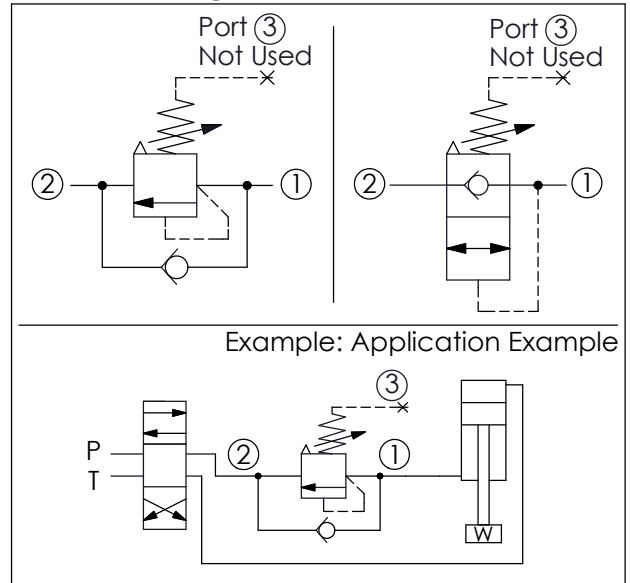


Ordering Code: **SC-11A-X-Y-Z**

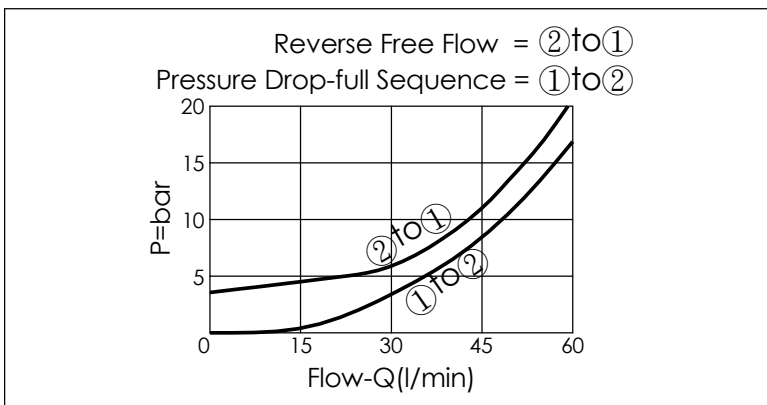
Control Option:
Maximum extension
from locating shoulder.
(Z=L Control shown)

UNIT:mm

Illustrations / detail are for reference only. Data subject to change.



TECHNICAL DATA	
Max. Operating pressure:	350 bar
Rated flow:	60 l/min
Cavity-Tooling:	11A-3
Installation torque:	40 - 50 Nm
Weight:	0.194 (Z=L) kg
<ul style="list-style-type: none"> Approximately 1 drop (0.07 cc) of fluid will pass from the pilot area to the vented spring chamber every 4000 cycles. 	



X	OPERATION
20	Standard Type
<ul style="list-style-type: none"> Response Time-Typical (2 ms) Maximum Leakage Approximately (0.7 cc/min.) 	

Y	SPRINGS	
	ADJUSTMENT RANGES	
A	35 - 210 bar	(70 bar Standard Setting)
B	20 - 105 bar	(70 bar Standard Setting)
C	140 - 420 bar	(140 bar Standard Setting)
D	14 - 55 bar	(28 bar Standard Setting)
E	7 - 28 bar	(14 bar Standard Setting)
W	55 - 315 bar	(70 bar Standard Setting)
※ Port ② to Port ① Check Valve Cracking Pressure 2.8 bar		

Z	OPTIONS	
L	Leakproof hex. socket screw.	
LP	Leakproof hex. socket screw. With stainless steel external metal components	
C	Stainless Steel Tamper Resistant Cover.	
K	Handknob with Lock Knob. (Order Code: 6ZAK001)	