

TECHNICAL DATA

Max. Operating pressure: 350 bar

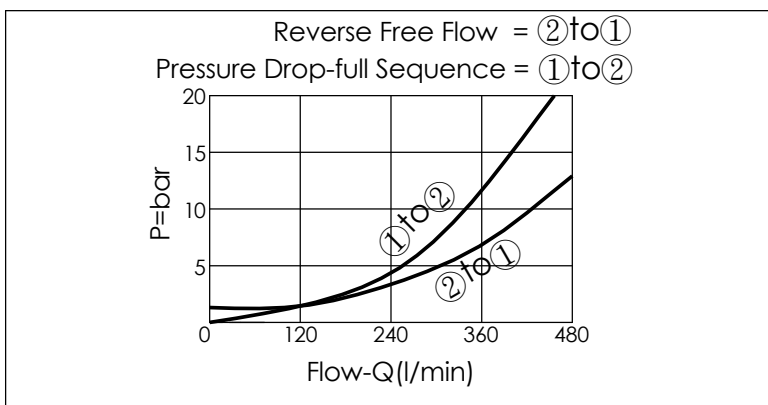
Rated flow: 480 l/min

Cavity-Tooling: 19A-3 (19AB-3)

Installation torque: 465 - 500 Nm

Weight: 1.568 (Z=L) kg

• Approximately 1 drop (0.07 cc) of fluid will pass from the pilot area to the vented spring chamber every 4000 cycles.



X	OPERATION
20	Standard Type
<ul style="list-style-type: none"> • Response Time-Typical (2 ms) • Maximum Leakage Approximately (0.7 cc/min.) 	

Y	SPRINGS	
	ADJUSTMENT RANGES	
A	35 - 210 bar	(70 bar Standard Setting)
B	20 - 105 bar	(70 bar Standard Setting)
C	140 - 420 bar	(140 bar Standard Setting)
D	14 - 55 bar	(28 bar Standard Setting)
E	7 - 28 bar	(14 bar Standard Setting)
W	55 - 315 bar	(70 bar Standard Setting)
<p>※ Port ② to Port ① Check Valve Cracking Pressure 2.8 bar</p>		

Z	OPTIONS	
L	Leakproof hex. socket screw.	
C	Stainless Steel Tamper Resistant Cover.	
K	Handknob with Lock Knob. (Order Code: 6ZAK001)	