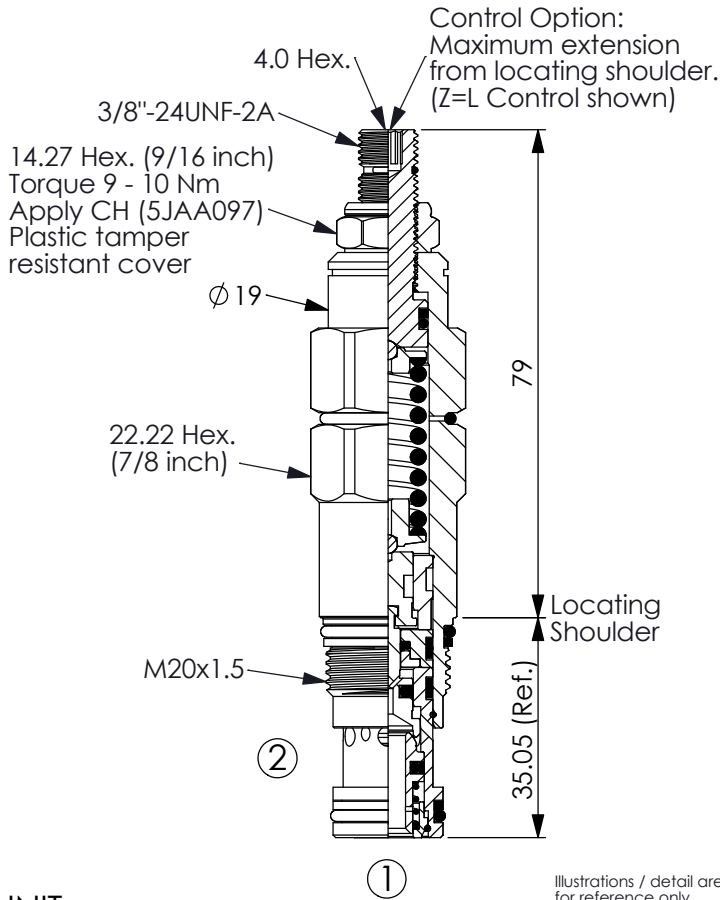
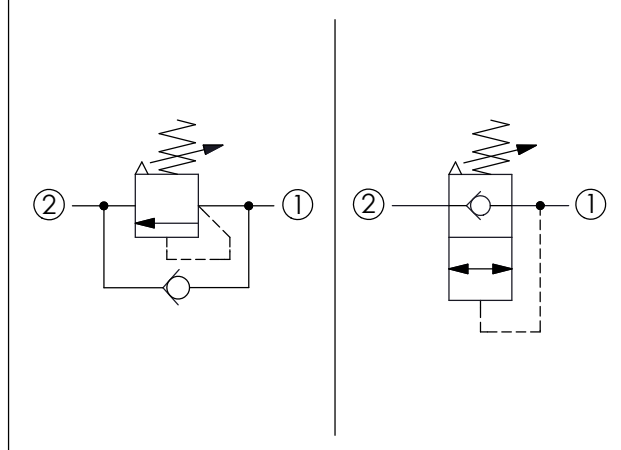


Ordering Code: **SC-13A-X-Y-Z**



UNIT:mm

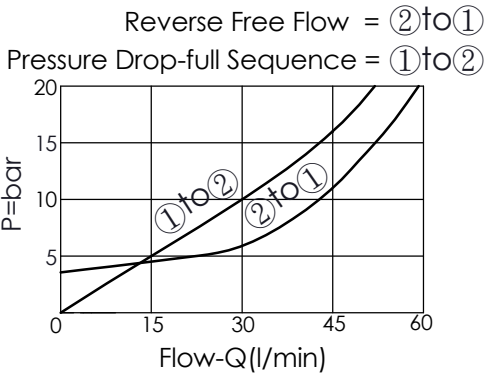
Illustrations / detail are for reference only. Data subject to change.



TECHNICAL DATA

| | | |
|--------------------------|-------------|-------|
| Max. Operating pressure: | 350 bar | |
| Rated flow: | 60 | l/min |
| Cavity-Tooling: | 13A-2 | |
| Installation torque: | 40 - 50 | Nm |
| Weight: | 0.203 (Z=L) | kg |

• Approximately 1 drop (0.07 cc) of fluid will pass from the pilot area to the vented spring chamber every 4000 cycles.



X OPERATION

20 Standard Type

- Response Time-Typical (2 ms)
- Maximum Leakage Approximately (0.7 cc/min.)

Z OPTIONS

| | | |
|-----------|---|--|
| L | Leakproof hex. socket screw. | |
| LP | Leakproof hex. socket screw. With stainless steel external metal components | |
| C | Stainless Steel Tamper Resistant Cover. | |
| K | Handknob with Lock Knob. (Order Code: 6ZAK001) | |

| Y | SPRINGS | |
|----------|-------------------|----------------------------|
| | ADJUSTMENT RANGES | |
| A | 35 - 210 bar | (70 bar Standard Setting) |
| B | 20 - 105 bar | (70 bar Standard Setting) |
| C | 140 - 420 bar | (140 bar Standard Setting) |
| D | 14 - 55 bar | (28 bar Standard Setting) |
| E | 7 - 28 bar | (14 bar Standard Setting) |
| W | 55 - 315 bar | (70 bar Standard Setting) |

※ Port ② to Port ① Check Valve Cracking Pressure 2.8 bar