

## SEQUENCE VALVE (Direct Acting without Reverse Flow Check)

Ordering Code: **SD-11A-X-Y-Z**

Control Option:  
Maximum extension  
from locating shoulder.  
(Z=L Control shown)

4.0 Hex.

3/8"-24UNF-2A

14.27 Hex. (9/16 inch)  
Torque 9 - 10 Nm  
Apply CH (5JAA097)  
Plastic tamper  
resistant cover

Ø19

22.22 Hex.  
(7/8 inch)

Drain ③

M20x1.5

Sequence ②

Inlet ①

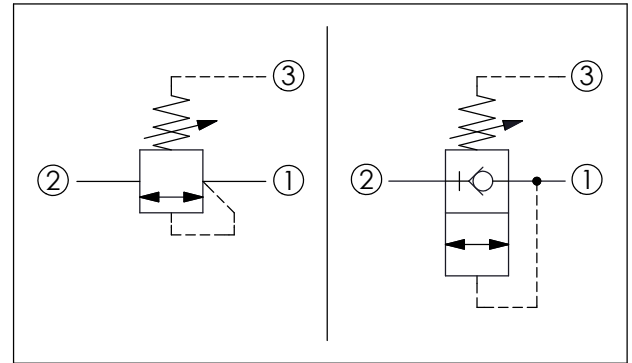
79

35.05 (Ref.)

Locating  
Shoulder



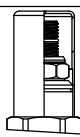
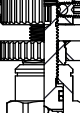
UNIT:mm

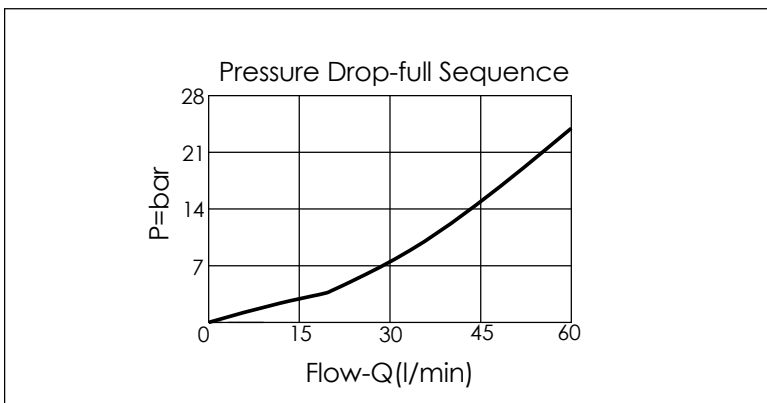
Illustrations / detail are  
for reference only.  
Data subject to change.



TECHNICAL DATA	
Max. Operating pressure:	350 bar
Rated flow:	60 l/min
Cavity-Tooling:	11A-3
Installation torque:	40 - 50 Nm
Weight:	0.196 (Z=L) kg

X	OPERATION
30	Standard Type
	<ul style="list-style-type: none"> <li>Response Time-Typical (2 ms)</li> <li>Maximum Leakage Approximately (0.7 cc/min.)</li> </ul>

Z	OPTIONS
L	Leakproof hex. socket screw. 
LP	Leakproof hex. socket screw. With stainless steel external metal components 
C	Stainless Steel Tamper Resistant Cover. 
K	Handknob with Lock Knob. (Order Code: 6ZAK001) 



Y	SPRINGS	
	ADJUSTMENT RANGES	
A	35 - 210 bar	(70 bar Standard Setting)
B	20 - 105 bar	(70 bar Standard Setting)
C	140 - 420 bar	(140 bar Standard Setting)
D	14 - 55 bar	(28 bar Standard Setting)
E	7 - 28 bar	(14 bar Standard Setting)
W	55 - 315 bar	(70 bar Standard Setting)