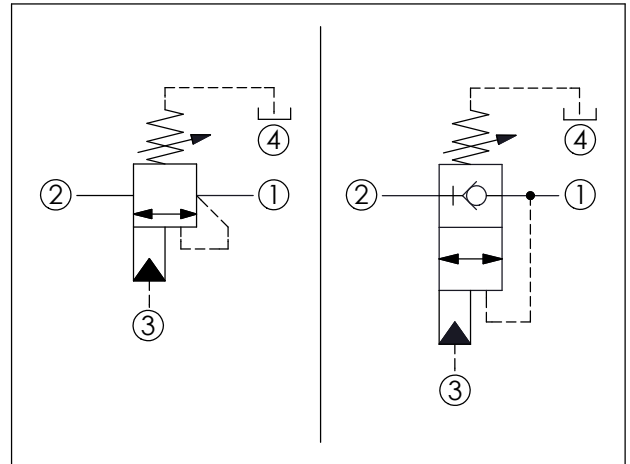
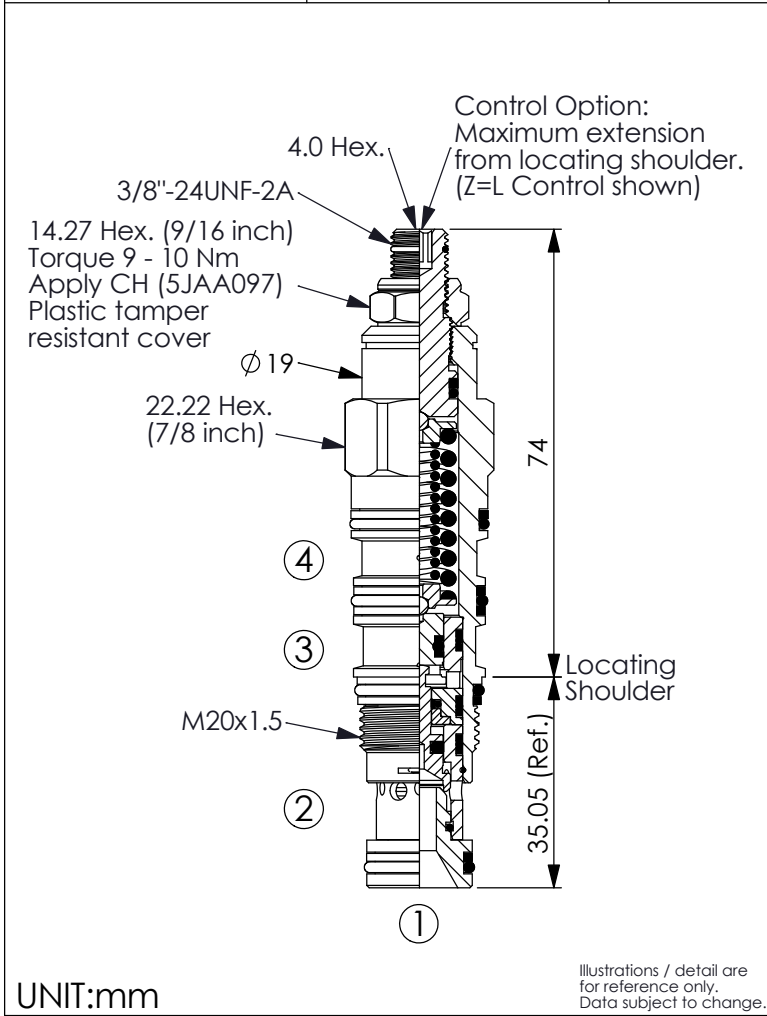
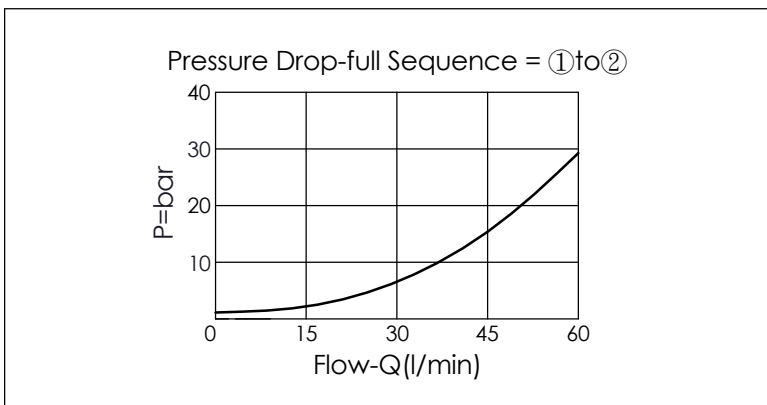


SEQUENCE VALVE (Direct Acting without Reverse Flow Check, With Relief Function)

Ordering Code: **SD-21A-X-Y-Z**



TECHNICAL DATA	
Max. Operating pressure:	350 bar
Rated flow:	60 l/min
Cavity-Tooling:	21A-4
Installation torque:	40 - 50 Nm
Weight:	0.19 (Z=L) kg



X	OPERATION
4C	3 : 1 (with sealed pilot)
	<ul style="list-style-type: none"> Response Time-Typical (2 ms) Maximum Leakage Approximately (0.7 cc/min.)

Y	SPRINGS	
	ADJUSTMENT RANGES	
H	70 - 280 bar (210 bar Standard Setting)	

Z	OPTIONS	
L	Leakproof hex. socket screw.	
C	Stainless Steel Tamper Resistant Cover.	
K	Handknob with Lock Knob. (Order Code: 6ZAK001)	