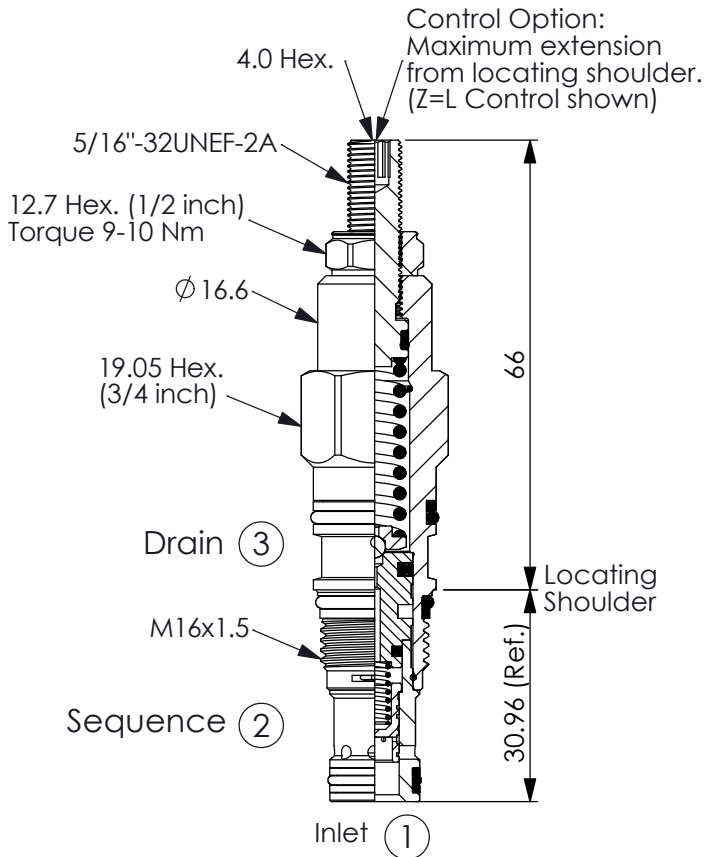
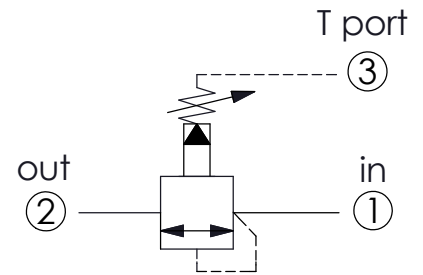


SEQUENCE VALVE (Pilot Operated, Balanced Piston)

Ordering Code: **SP-163A-X-Y-Z**

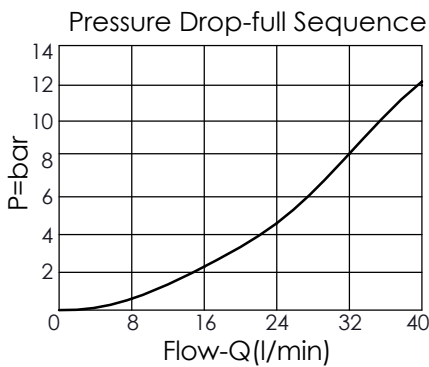


UNIT:mm



TECHNICAL DATA

Max. Operating pressure:	350	bar
Rated flow:	30	l/min
Cavity-Tooling:	163A-3	
Installation torque:	27-33	Nm
Weight:	0.11 (Z=L)	kg
• Maximum Leakage Approximately (30 cc/min./70 bar)		



X OPERATION

30 Standard Type

Y SPRINGS

ADJUSTMENT RANGES

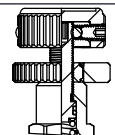
A	5-210 bar (70 bar Standard Setting)
B	5-105 bar (70 bar Standard Setting)
C	5-420 bar (70 bar Standard Setting)
N	5-55 bar (28 bar Standard Setting)
Q	5-28 bar (14 bar Standard Setting)
W	5-315 bar (70 bar Standard Setting)

Z OPTIONS

L Leakproof hex. socket screw.



K Handknob with Lock Knob. (Order Code: 7ZAK001)



C Stainless Steel Tamper Resistant Cover.

