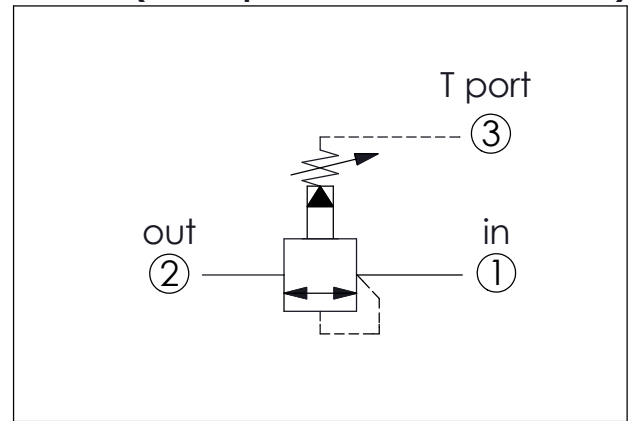


SEQUENCE VALVE (Pilot Operated, Balanced Piston)



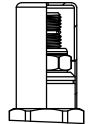
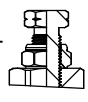
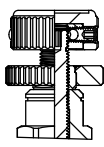
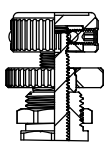
Ordering Code: **SP-11A-X-Y-Z**

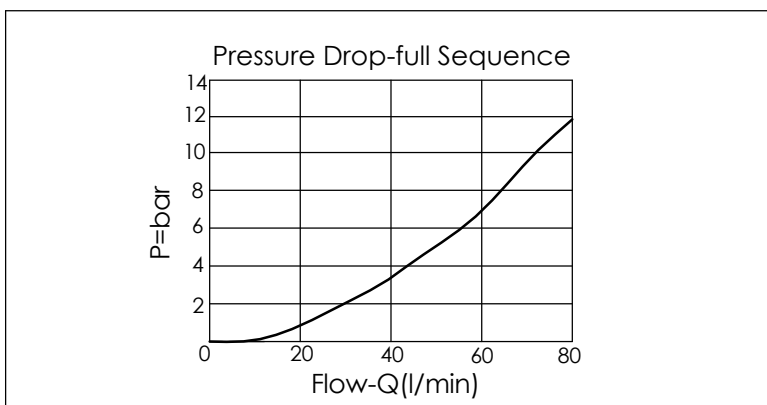
UNIT:mm



TECHNICAL DATA	
Max. Operating pressure:	350 bar
Rated flow:	60 l/min
Cavity-Tooling:	11A-3
Installation torque:	40-50 Nm
Weight:	0.16 (Z=L) 0.14 (Z=G) kg
• Maximum Leakage Approximately (33 cc/min./70 bar)	

X	OPERATION
30	Standard Type

Z	OPTIONS
L	Leakproof hex. socket screw. 
LP	Leakproof hex. socket screw. With stainless steel external metal components 
C	Stainless Steel Tamper Resistant Cover. 
G	Wrench Adjustment 
K	Handknob with Lock Knob. (Order Code: 6ZAK001) 
KF	Handknob with Panel Mount. 



Y	SPRINGS	
	ADJUSTMENT RANGES	
A	7-210 bar	(70 bar Standard Setting)
B	3.5-105 bar	(70 bar Standard Setting)
C	10.5-420 bar	(70 bar Standard Setting)
D	1.7-55 bar	(28 bar Standard Setting)
E	1.7-28 bar	(14 bar Standard Setting)
N	4-55 bar	(28 bar Standard Setting)
Q	4-28 bar	(14 bar Standard Setting)
W	10.5-315 bar	(70 bar Standard Setting)