

SEQUENCE VALVE (Pilot Operated, Balanced Piston)

Ordering Code: **SP-2A-X-Y-Z**

Control Option:
Maximum extension
from locating shoulder.
(Z=L Control shown)

4.0 Hex.

3/8"-24UNF-2A

14.27 Hex. (9/16 inch)
Torque 9-10 Nm
Apply CH (5JAA097)
Plastic tamper
resistant cover

Ø25

28.57 Hex.
(1-1/8 inch)

L=71
K=78

Drain ③

1.0"-14UNS-2A

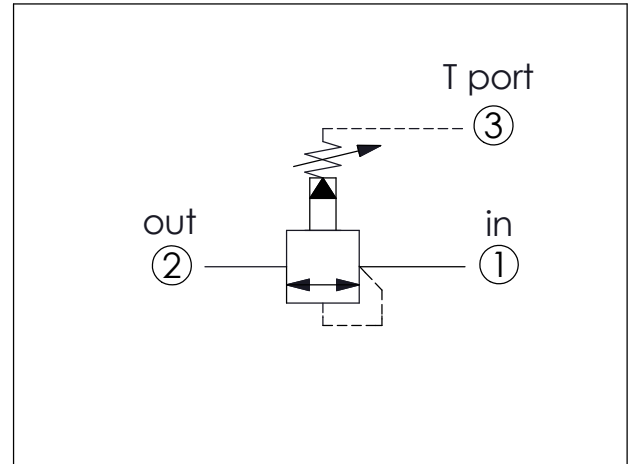
Sequence ②

Inlet ①

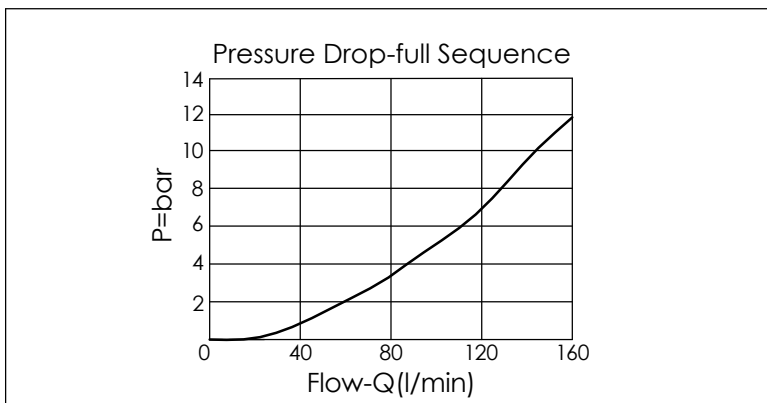
35.12 (Ref.)

Locating
Shoulder

UNIT:mm



TECHNICAL DATA		
Max. Operating pressure:	350 bar	
Rated flow:	120	l/min
Cavity-Tooling:	2A-3	
Installation torque:	60-70	Nm
Weight:	0.28 (Z=L)	kg
• Maximum Leakage Approximately (50 cc/min./70 bar)		



X	OPERATION	
30	Standard Type	

Y	SPRINGS	
	ADJUSTMENT RANGES	
A	7-210 bar	(70 bar Standard Setting)
B	3.5-105 bar	(70 bar Standard Setting)
C	10.5-420 bar	(70 bar Standard Setting)
D	1.7-55 bar	(28 bar Standard Setting)
E	1.7-28 bar	(14 bar Standard Setting)
N	4-55 bar	(28 bar Standard Setting)
Q	4-28 bar	(14 bar Standard Setting)
W	10.5-315 bar	(70 bar Standard Setting)

Z	OPTIONS	
L	Leakproof hex. socket screw.	
K	Handknob with Lock Knob. (Order Code: 6ZAK001)	
C	Stainless Steel Tamper Resistant Cover.	