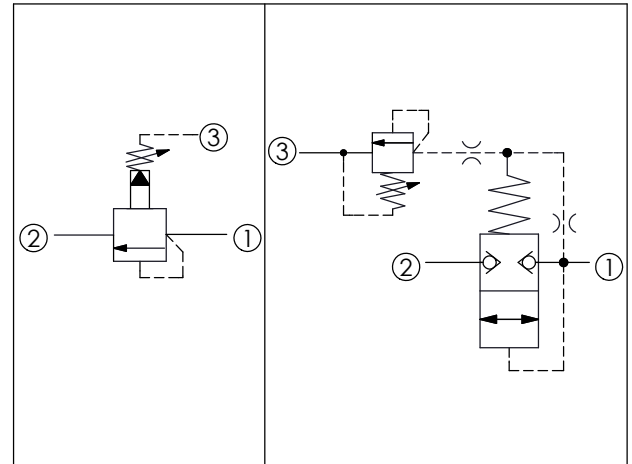


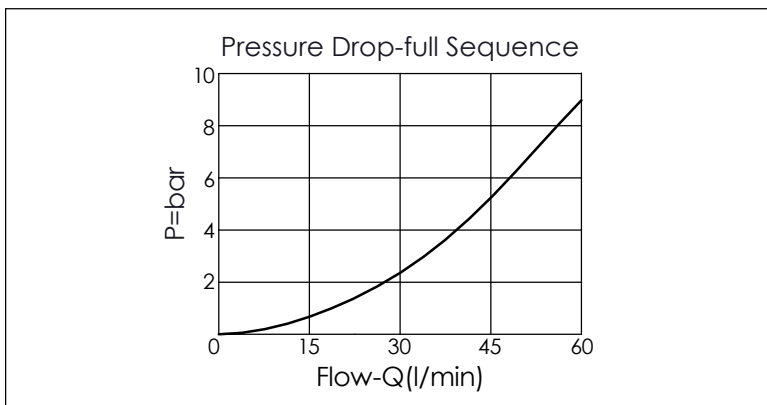
SEQUENCE VALVE (Pilot Operated, Balanced Poppet)

Ordering Code: **SP-11A-X-Y-Z**

UNIT:mm



TECHNICAL DATA	
Max. Operating pressure:	350 bar
Rated flow:	60 l/min
Cavity-Tooling:	11A-3
Installation torque:	40-50 Nm
Weight:	0.16 (Z=L) kg



X	OPERATION
3G	Balanced Poppet
<ul style="list-style-type: none"> • Dirt tolerant • Maximum Leakage Approximately (0.7 cc/min./70 bar) • If the pressure drop of relief valve is high, it easily occurs cavitation which cause noise and manifold erosion. In order to improve this situation, please select balanced poppet structure. 	

Y	SPRINGS	
	ADJUSTMENT RANGES	
A	7-210 bar	(70 bar Standard Setting)
B	3.5-105 bar	(70 bar Standard Setting)
C	10.5-420 bar	(70 bar Standard Setting)
N	4-55 bar	(28 bar Standard Setting)
Q	4-28 bar	(14 bar Standard Setting)
W	10.5-315 bar	(70 bar Standard Setting)

Z	OPTIONS	
L	Leakproof hex. socket screw.	
K	Handknob with Lock Knob. (Order Code: 6ZAK001)	
C	Stainless Steel Tamper Resistant Cover.	