

## SEQUENCE VALVE (Pilot Operated, Balanced Poppet)

Ordering Code: **SP-2A-X-Y-Z**

Control Option:  
Maximum extension  
from locating shoulder.  
(Z=L Control shown)

4.0 Hex.

3/8"-24UNF-2A

14.27 Hex. (9/16 inch)  
Torque 9-10 Nm  
Apply CH (5JAA097)  
Plastic tamper  
resistant cover

Ø 25

28.57 Hex.  
(1-1/8 inch)

Drain (3)

1.0"-14UNS-2A

Sequence (2)

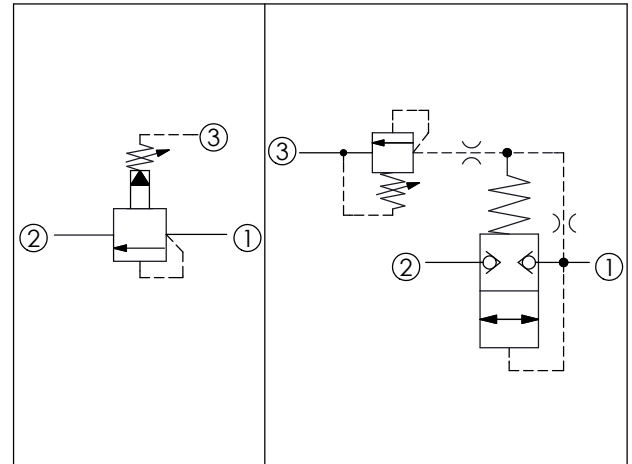
Inlet (1)

L=71  
K=78

35.12 (Ref.)

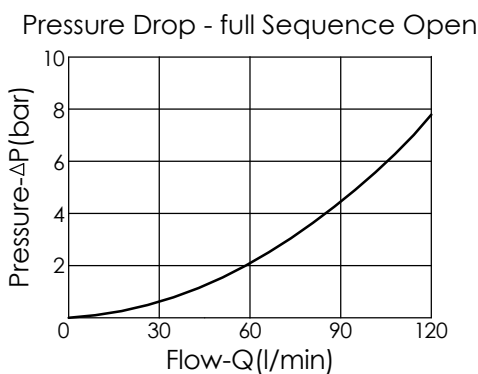
Locating  
Shoulder

UNIT:mm



### TECHNICAL DATA

Max. Operating pressure:	350	bar
Rated flow:	120	l/min
Cavity-Tooling:	2A-3	
Installation torque:	60-70	Nm
Weight:	0.29 (Z=L)	kg



### X OPERATION

**3G** Balanced Poppet

- Dirt tolerant
- Maximum Leakage Approximately (0.7 cc/min./70 bar)
- If the pressure drop of relief valve is high, it easily occurs cavitation which cause noise and manifold erosion. In order to improve this situation, please select balanced poppet structure.

**Y**

### SPRINGS

#### ADJUSTMENT RANGES

<b>A</b>	7-210 bar (70 bar Standard Setting)
<b>B</b>	3.5-105 bar (70 bar Standard Setting)
<b>C</b>	10.5-420 bar (70 bar Standard Setting)
<b>N</b>	4-55 bar (14 bar Standard Setting)
<b>Q</b>	4-28 bar (14 bar Standard Setting)
<b>W</b>	10.5-315 bar (70 bar Standard Setting)

**Z**

### OPTIONS

<b>L</b>	Leakproof hex. socket screw.	
<b>K</b>	Handknob with Lock Knob. (Order Code: 6ZAK001)	
<b>C</b>	Stainless Steel Tamper Resistant Cover.	