

Ordering Code: **SQ-08W-X-Y-Z**

Control Option:
Maximum extension
from locating shoulder.
(Z=L Control shown)

4.0 Hex.

3/8"-24UNF-2A

14.27 Hex. (9/16 inch)
Torque 9-10 Nm
Apply CH (5JAA097)
Plastic tamper
resistant cover

Ø25

L=77.5
K=84

25.4 Hex.
(1.0 inch)

3/4"-16UNF-2A

Locating
Shoulder

9.7

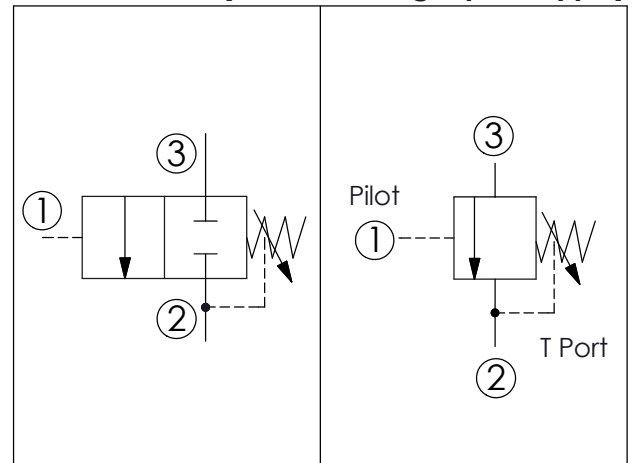
40.8

③

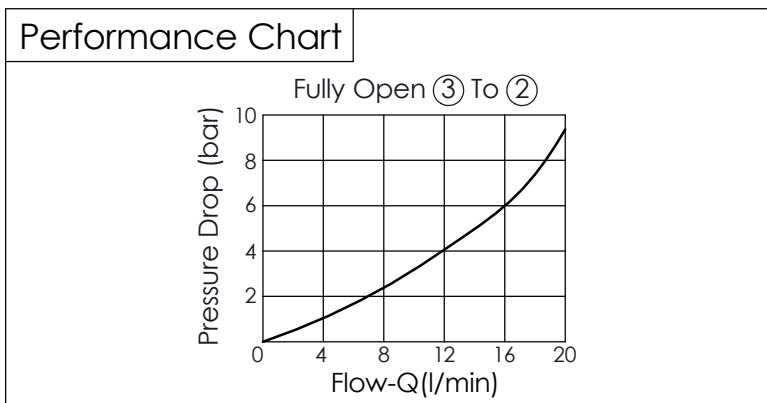
②

①

UNIT:mm



TECHNICAL DATA	
Max. pressure:	240 bar (Refer To Performance Chart)
Rated flow:	15 l/min (Refer To Performance Chart)
Cavity-Tooling:	08W-3
Installation torque:	25-35 Nm
Weight:	0.23 (Z=L) kg



X	OPERATION
33	External Pilot, Internal Drain

Y	SPRINGS	
	ADJUSTMENT RANGES	
B	10-90 bar	(25 bar Standard Setting)
D	7-42 bar	(25 bar Standard Setting)
E	3-21 bar	(14 bar Standard Setting)
K	20-166 bar	(70 bar Standard Setting)

Z	OPTIONS	
L	Leakproof hex. socket screw.	
K	Handknob with Lock Knob. (Order Code: 6ZAK001)	
T	Three-winged Handknob Kit.	